



  
**Marshall**  
PRODUCT BROCHURE 2025





## WELCOME TO MARSHALL TRAILERS

---

*Connections lie at the heart of everything we do. Since 1952, we've thrived on bridging gaps – linking our business to customers, our brand to changing times, people to exceptional products, and the industry to agricultural innovations. As we venture into the future, our commitment to our traditional values combined with embracing technological innovation, allows us to forge standout, enduring and efficient products.*



# PRODUCT BROCHURE CONTENTS

## INTRODUCTION

Enjoy a brief history of the Marshall Trailers business and an introduction to the people behind the name.

PAGES  
04-05

<p>PAGES <b>06-09</b></p> <p>S Drop-side Range Trailers</p> 	<p>PAGES <b>10-13</b></p> <p>QM Range Monocoque Trailers</p> 	<p>PAGES <b>14-17</b></p> <p>HD Range Hybrid Dumper Trailers</p> 	<p>PAGES <b>18-21</b></p> <p>BC Flatbed Trailers</p> 
<p>PAGES <b>22-25</b></p> <p>LL Low Loader Trailers</p> 	<p>PAGES <b>26-29</b></p> <p>LST Livestock Containers</p> 	<p>PAGES <b>30-31</b></p> <p>FT Range Feed Trailers</p> 	<p>PAGES <b>32-33</b></p> <p>PC People Carrier Trailers</p> 
<p>PAGES <b>34-36</b></p> <p>MS Range Muck Spreaders</p> 	<p>PAGES <b>37-39</b></p> <p>VES Range Rear Discharge Spreaders</p> 	<p>PAGES <b>40-42</b></p> <p>ST Range Slurry Tankers</p> 	<p>PAGE <b>43</b></p> <p>Optional Equipment</p> 
<p>PAGES <b>44-45</b></p> <p>Tyre &amp; Running Gear Guides</p> 		<p>PAGES <b>46-48</b></p> <p>Behind the Scenes Into the Future Tel / Web / Socials</p> 	

# DEALER FIT CONCEPT

SCAN THE  
CODE TO  
FIND OUT  
MORE »



The design of trailers has changed dramatically over the last seventy years, from hundreds of trailers exactly the same to the current situation where almost every trailer is custom built. Naturally this makes it more and more difficult to stock the correct model, with the correct specification; something we are well aware of and are beginning to address with our new dealer fit concept! The majority of options will be able to be easily and efficiently fitted to different models without paint rectification, allowing almost any specification of trailer to be created from a standard model. This quite obviously makes the Marshall Trailer you purchase future proofed for this fast ever-changing world. It is as simple as following these steps:

- 1 Study the specification tables in our pricelist or on our website. Identify whether an option can be dealer fitted and note how many hours are required to fit the option; the specification tables have the following text to identify this:

DF - 1	
Indicates option can be dealer fitted.	Fitting time in hours.

- 2 Contact us to order the required kit, either by telephone, email or by ordering through our website.
- 3 The kit will be dispatched to you, along with fitting instructions. If necessary do not hesitate to contact us for further help when fitting kits.
- 4 Fit the required kits to meet a customer's specification, allowing you to retail a machine that would otherwise remain in stock.

The Dealer Fit Concept is one of the many unique features incorporated into the Marshall Range. Study our pricelist to see many other exclusive innovations and production techniques, such as the integration of robotic welding and our new state of the art paint facility!

MARSHALL TRAILERS

PRODUCT BROCHURE 2025  
PAGE 3

# THE MARSHALL COMPANY HISTORY

Charles J Marshall (Aberdeen) Ltd celebrates its 73rd anniversary in 2025. In 1952, the Marshall Trailer business was conceived by Charles J Marshall. As a tenacious 18-year-old apprentice joiner he decided that after his National Service he would establish his own business, producing top-quality machinery that he could sell en-masse. This allowed him to capitalize on the opportunity that the introduction of the new and technically advanced tractor had created in the agricultural industry.

His ambition was to become the largest trailer manufacturer in Scotland, and to achieve this goal he purchased a small croft on the edge of Aberdeen for the sum of £2,450. This was to the delight of his neighbours as they had endured years of noise and constant TV interference from the power tools used to produce the original trailers!

By 1956 the first part of the factory building was completed and this is where the company continues to trade to this day. The greatest advantage to this factory was the ability to use the relatively new concept of a production line and by the mid-sixties well over 1600 units were being produced; a huge increase from the mere 46 units produced in 1952.

This increase in production was helped by the continual investment in new machines and plant, with the factory boasting the largest hydraulic press brake north of the Clyde when it was installed. This combined with his relentless work ethic and introduction of the rotor spreader in the 1970s and slurry tankers in the 1980s allowed output to grow to over 2000 machines.

In 1980 the bright new talent of Charles Richard joined the business and like his father he worked his way through the shop floor ensuring he had the same sound understanding of the company. Taking up his current position as managing director in 1998, he has successfully steered the company through the years of BSE, foot and mouth and more recently the Covid-19 pandemic.

Charles J Marshall sadly passed away in 2016 at the age of 81, he was an inspiring presence and continued to work right up until he passed. However, the company continues to move from strength to strength with Charles Richard joined by his two sons Charles Peter and David. Together they continue to annually invest six figure sums in new plant, modernise the product range and move the company forward.

## 3 TON REAR-TIPPING HYDRAULIC TRAILER

Models T2/8K, T2/9U, T3/8K, T3/9U & T3/10M



(3-ton rear tipping hydraulic trailer first advertised in 1952)



(1967 newspaper ad featuring Charles J Marshall)



(The production line as it was in 1973)



(Charles J Marshall 24th August 1934 - 13th July 2016)



(The inception of the hydraulic press brake)



(SAP automated robot welder)



## MEET THE MARSHALL FAMILY



**NAME**  
Charles R Marshall

**POSITION**  
Managing Director

**TELEPHONE**  
01224 722777

**EMAIL**  
charles@marshall-trailers.co.uk

I started my working life at the young age of fifteen on the shop floor learning all aspects of our manufacturing process; the experience proved invaluable as I believe first-hand knowledge is critical for running a successful business. The manufacturing element of the business is also my passion, designing new products and then seeing them come together as a practical and useful tool that customers can use in their own business is incredibly satisfying. Nothing pleases me more than seeing a Marshall machine being used out in the field.

Over the years I have seen many challenges to our industry and company, but the grounding I received from a very down to earth, astute father has stayed with me. His ethos to business was simple, "keep it practical, do what you said you would do and the customer will buy it!" These words have stayed with me and helped guide our business, combined with a policy of continual investment in the latest technology I am very proud of what our company manufactures and the service we provide!

In my life I have been very privileged to have both sons working in the business with me, a positive for the company but also for me personally; what more could I ask for!



**NAME**  
David Marshall

**POSITION**  
Sales / Technical

**TELEPHONE**  
01224 722777

**EMAIL**  
david@marshall-trailers.co.uk

I started my education in the agricultural industry by attending Lackham College in Wiltshire to study an Engineering Diploma. This was a brilliant and enjoyable experience that gave me a huge grounding in the industry and I left the college with the Student of the Year award. Although my parents had encouraged me to explore other opportunities, I always wanted to return to the family business and put my years at Lackham College to good use.

It can be difficult being the third generation in a family business, particularly trying to make improvements to a business that is already highly regarded. However, it quickly became apparent my father had been holding back investing in the business until my brother and I had decided we were fully committed! Change started almost immediately, and we were encouraged to express any and all views with the only condition being that it had to keep within the company's ethos and values.

Ten years on I can say it has been an incredibly exciting and fulfilling journey seeing how the company has changed and advanced. Now I oversee the sales, transport and all the other tasks that are required to run a business, from the decisions on staff to what product to develop next.



**NAME**  
Charles P Marshall

**POSITION**  
Sales / Administration

**TELEPHONE**  
01224 722777

**EMAIL**  
charlesp@marshall-trailers.co.uk

Since a very young age I was involved in the family business, and despite being encouraged to explore other options outside the business it was always my intention to work at Marshall Trailers. I finished studying law at Aberdeen University and started with the company in June 2012.

I was able to work my way through the business learning all aspects of how it operated and giving a sound understanding how things worked and where we needed to make improvements and changes. The business has been transformed dramatically over the last 13 years, and my role in this was the introduction of our SAP ERP software. Every process and part had to be put into the system, which was a huge challenge, but one that is paying off for us now.

Today I'm heavily involved with the accounting, admin and other general responsibilities that are part of any business. Looking forward I'm excited for the next ten years of progression we have planned and ensuring we continue to deliver for our customers.



## S DROP-SIDE TRAILER RANGE





# THE MOST VERSATILE TRAILER YOU WILL EVER USE

SCAN THE  
CODE TO  
FIND OUT  
MORE »



Our range of drop-side trailers can be configured to suit almost any requirement and adjusted to your specification, with a number of useful options to ensure our trailers can tackle any job.

**Grain Sides** - available on the S-5 upwards; comes complete with a full height door to allow bulky loads to be safely discharged.

**Silage Sides** - available on the S-5 upwards; comes complete with two side loading panels and uses Marshall's unique hydraulic silage door locking system fitted to the rear of the trailer, preventing any damage from the side.

**Mesh Sides** - available on all models; these sides simply bolt on to the trailer. They provide an increased capacity for light loads such as leaves and grass.

**Bale Extension & Harvest Ladders** - available on the S-5 upwards; the extension increases the bed lengths of our S-5 & S-6 models by 3' and our S-85 & S-10 models by 4'. The extensions and ladders are also galvanised for an improved lifespan.

**Tyre Options** - there are a range of tyres available for each model that provide improved floatation or better performance on the road. To find out more information about our tyre options see page 9 for the drop-side specification chart and page 44 for our tyre guide.

**Door Options** - the entire drop-side range has several door options to ensure each model can be specified to match customer requirements. The standard top-hinged rear door can be replaced with top & bottom hinged doors, extended rear doors or even barn doors.

**Lighting Options** - lights are standard on our S-4 model upwards with the S-85 and S-10 models benefitting from LED lights. On our S-1 and S-2 models lights are available as an option. The light units are all commercial grade, sealed to prevent water damage and use a plug and play system for easy maintenance. In addition LED lights, LED beacons and number plate brackets c/w lights are available as options for all models.

**Tipping Rams** - all the drop-side range have hydraulic tipping rams as standard with the S-1 to S-6 models using a single tipping ram. The S-85 model uses a twin tipping ram design and the S-10 uses a single multi-stage ram that pushes vertically, reducing oil requirements and improving cycle times.



(Model shown: S-5 drop sides)



(Model shown: S-85 grain sides)



(Model shown: S-2 mesh sides)



(Bale extension)



(400 - 60 x 15.5 floatation tyres)



(Recessed lights)



# ENGINEERED TO LAST & EQUIPPED WITH THE RIGHT RUNNING GEAR

SCAN THE  
CODE TO  
FIND OUT  
MORE »



Our entire drop-side range has been intelligently designed with a number of clever features to maximise strength and durability. Combined with this is a huge range of different running gear options, that ensure our drop-side range can meet the challenges of any job.

**Pressed Panel Construction** - this production technique increases strength and rigidity without adding significant weight, ensuring that the side panels can safely and easily be handled or removed.

**Fixed Headboard** - every trailer in our drop-side range has a fixed headboard as standard. This increases torsional rigidity to reduce flexing when the trailer is being used.

**Hinge Points** - the complete drop-side range has a unique side hinge design allowing the side to be dropped into securing hooks on the trailer body. This makes removing and adding the sides much easier for the operator as there is no requirement to line up any pins while holding the side. In addition, all the hinges are fully bushed for a long and trouble-free service life.

**Fully Welded Construction** - no compromises are made in the construction of our trailers, with every model utilizing a fully welded construction. This provides two major benefits; the overall durability of the trailer is increased and there is less opportunity for water to sit and cause rust.

**Marshall Chassis Design** - our smaller models use a fully-welded channel chassis that provides unmatched strength while keeping weight down. Our S-85 and S-10 models use a square chassis configuration to improve stability and reduce flexing when loading.

**Suspension Springs** - available on our tandem axle S-85 and S-10 models as a no-cost option and on our single-axle S-4, S-5 and S-6 models as an optional extra. The benefit of spring suspension is for road-work because it handles uneven surfaces better at speed.

**Rocker Tandem** - only available on our tandem axle S-85 and S-10 models as a no-cost option. This suspension set-up is excellent on steep ground or when transporting high-loads since it prevents lateral movement improving the stability of the trailer.

**Axles & Brakes** - our whole drop-side range comes complete with hydraulically operated brakes as standard; the only exceptions are our S-1 and S-2 models which have the option to fit hydraulic brakes.



(Hinge design)



(Models shown: S-1 and S-2)



(Model shown: S-4 rear view)



(Model shown: S-6 front view)



(Spring suspension)



(Rocker tandem suspension)



# S DROP-SIDE TRAILER RANGE SPECIFICATIONS & OPTIONAL EQUIPMENT

SCAN THE  
CODE TO  
FIND OUT  
MORE »



	S-1	S-2	S-4	S-5	S-6	S-85	S-10
Body Size - Imperial	6' x 4' x 13"	8' x 5' x 15"	10' x 6' x 18"	10' 6" x 6' 9" - 7' x 21"	12' x 6' 9" - 7' x 21"	14' x 7' 6" - 7' 9" x 24"	16' x 7' 6" - 7' 9" x 24"
Standard Tyre Size	23 x 8.5 x 12	10.0 x 12	10.0 x 15 - 10 ply	12.5 x 15 - 14 ply	12.5 x 15 - 14 ply	12.5 x 15 - 14 ply	385 - 65 x 22.5
Axle	50mm 5 stud	50mm 5 stud	60mm 6 stud	70mm 6 stud	70mm 6 stud	70mm 6 stud Tandem	80mm 8 stud Tandem
Brake	N/A	N/A	250 x 60	300 x 60	300 x 60	300 x 60	350 x 90
Carrying Capacity	1.5 tons	2 tons	4 tons	5 tons	6.5 tons	8.5 tons	10.5 tons
Floor Thickness	2.5mm	2.5mm	3mm	3mm	4mm	4mm	4mm
Side Thickness	2.5mm	2.5mm	2.5mm	2.5mm	2.5mm	2.5mm	2.5mm
Lights	○ (DF-1)	○ (DF-1)	○	○	○	○	○
Hyd Brakes	○ (DF-1.5)	○ (DF-1.5)	○	○	○	○	○
Side Loading Panels	N/A	N/A	N/A	○	○	○	○
Volume Basic	26 cu.ft / 0.74 cu. mtrs	50 cu.ft / 1.41 cu. mtrs	90 cu.ft / 2.55 cu. mtrs	128 cu.ft / 3.62 cu. mtrs	147 cu.ft / 4.16 cu. mtrs	216 cu.ft / 6.1 cu. mtrs	248 cu.ft / 7.0 cu. mtrs
Volume Grain	N/A	N/A	N/A	238 cu. ft / 6.7 cu. mtrs	273 cu. ft / 7.7 cu. mtrs	434 cu. ft / 12.2 cu. mtrs	496 cu. ft / 18.3 cu. mtrs
Volume Silage	N/A	N/A	N/A	457 cu. ft / 13 cu. mtrs	525 cu. ft / 14.8 cu. mtrs	704 cu. ft / 18.4 cu. mtrs	930 cu. ft / 21.06 cu. mtrs
Basic Trailer Weight	340 kgs	460 kgs	840 kgs	1100 kgs	1360 kgs	2310 kgs	3400 kgs
Loading Height Basic	40" / 1.02m	45" / 1.14m	52" / 1.32m	58" / 1.47m	60" / 1.52m	65" / 1.65m	71" / 1.80m
Tipping Mechanism	Single Hydraulic Ram	Single Hydraulic Ram	Single Hydraulic Ram	Single Hydraulic Ram	Single Hydraulic Ram	Twin Hydraulic Rams	Single 5 Stage Hydraulic Ram
<b>OPTIONAL EQUIPMENT</b>							
Grain Sides	○	○	○	○ (DF-2.5)	○ (DF-2.5)	○ (DF-2.5)	○ (DF-2.5)
Silage Sides	○	○	○	○ (DF-2.5)	○ (DF-2.5)	○ (DF-2.5)	○ (DF-2.5)
26.0 x 12	○ (DF-0.5)	○ (DF-0.5)	○	○	○	○	○
12.5 x 15	○	○	○ (DF-0.5)	○	○	○	○
340-65 x 18 Radial	○	○	○	○ (DF-0.5)	○ (DF-0.5)	○ (DF-1)	○
400-60 x 15.5	○	○	○ (DF-0.5)	○ (DF-0.5)	○ (DF-0.5)	○ (DF-1)	○
550-45 x 22.5	○	○	○	○	○	○	○ (DF-1)
8 inch Hatch	○	○	○	○	○	○	○
12 inch Hatch	○	○	○	○	○	○	○
Spring Drawbar (Adjustable)	○	○	○	○	○	○	○
Swivel Hitch	○	○	○	○	○	○	○
Bale Extension	○	○	○	○ (DF-1)	○ (DF-1)	○ (DF-1)	○ (DF-1)
Harvest Ladders - Galvanized (pair)	○	○	○	○ (DF-0.25)	○ (DF-0.25)	○ (DF-0.25)	○ (DF-0.25)
Springs for Single Axle	○	○	○	○	○	○	○
Trailer Cover (640g PVC)	○ (DF-0.25)	○ (DF-0.25)	○ (DF-0.25)	○ (DF-0.25)	○ (DF-0.25)	○ (DF-0.25)	○ (DF-0.25)
LED Beacon	○ (DF-0.25)	○ (DF-0.25)	○ (DF-0.25)	○ (DF-0.25)	○ (DF-0.25)	○ (DF-0.25)	○ (DF-0.25)
LED Tail Lights	○ (DF-1)	○ (DF-1)	○ (DF-0.5)	○ (DF-0.5)	○ (DF-0.5)	○	○
10 Stud Commercial Axle	○	○	○	○	○	○	○
10 Stud Commercial Axle c/w ABS Brakes	○	○	○	○	○	○	○
Air/Oil Brakes (non ABS) c/w Load Sensing	○	○	○	○	○	○ (DF-4)	○ (DF-4)
Oil Load Sensing	○	○	○	○	○	○ (DF-2)	○ (DF-2)
18" Mesh Sides	○ (DF-1.5)	○ (DF-1.5)	○ (DF-1.5)	○ (DF-1.5)	○ (DF-1.5)	○ (DF-1.5)	○ (DF-1.5)
Rear Tow Hitch c/w Lights and Brakes	○	○	○	○	○	○ (DF-2)	○ (DF-2)
Jack Screw in lieu of Skid	○	○	○	○ (DF-0.5)	○ (DF-0.5)	○ (DF-0.5)	○ (DF-0.5)
Rear Ramps (Aluminium)	○ (DF-0.25)	○ (DF-0.25)	○ (DF-0.25)	○ (DF-0.25)	○ (DF-0.25)	○ (DF-0.25)	○ (DF-0.25)

Scan the QR code above or visit [www.marshall-trailers.co.uk](http://www.marshall-trailers.co.uk) for our retail pricing & full range of options.

Dealer Fit ● Standard ○ Optional ● Not Available

MARSHALL TRAILERS

PRODUCT BROCHURE 2025  
PAGE 9

## QM MONOCOQUE TRAILER RANGE





# BUILT TO PERFORM AND SPECIFIED WITH HIGH-PERFORMANCE RUNNING GEAR

SCAN THE  
CODE TO  
FIND OUT  
MORE »



Our QM range is built to perform, with a superior construction and clever design. This is combined with high-performance running gear to ensure our entire QM range is equipped to handle the faster speeds of modern tractors.

**Body Design** - the floors of the entire range are 5mm thick and the sides are either 3.5mm or 4mm thick, ensuring an extended service life. All QM models have a tapered body to allow materials to be safely discharged, this is absolutely essential for silage and muck. When mudguards are specified the floor thickness above the wheels is 10mm and the mudguards are designed to bolt on, for easy replacement in the event of damage, and tapered to prevent material build up on top of the mudguard. Every model also benefits from a fully-welded construction with a substantial number of floor and side bearers to improve overall rigidity and strength. Finally, every QM model has very generous cubic capacities allowing the stated weights to be carried.

**Tipping Mechanism** - the QM-11 model upwards benefits from a single, multi-stage displacement ram that uses less oil and has reduced trailer tipping cycles by 20%. This is obviously more efficient, but also safer as the trailer spends less time tipped where it is more likely to be damaged or an accident to happen.

**Chassis Design** - the QM-11 model upwards uses a unique chassis design that is formed from heavy duty channels with 6mm, 8mm or 10mm reinforcing plates stitch welded to the channels. This set-up provides unrivalled strength, while also allowing the chassis to flex when required; if the chassis is too rigid then it can become prone to cracking and premature failure.

**Spring Suspension** - available on all tandem axle QM models as a no-cost option and available on our QM-6 single axle model as a priced option. Spring suspension provides a very smooth ride while still providing good stability; this is made possible due to the design of our QM range, keeping the running heights as low as possible and the fitting of cleverly engineered spring sets. The QM-8, 11, 12 and 1200 models use multi-leaf springs that are matched to the carrying capacity, and on the larger models they benefit from mono-leaf 24-ton commercial spring sets to handle the increased weights.

**Rocker Tandem Suspension** - available on our tandem axle models up to 12 tons as a no-cost option. This suspension set-up is more stable than springs as it eliminates lateral movement, while providing a smooth ride when travelling forward. Our rocker tandems are constructed from box-section with a 50mm solid steel bar pivot, that has devlon bushes and grease points to ensure an extended working life-span. The rocker tandem units are also welded on our robotic welders to provide a precise and consistent finish; critical for any suspension component.

**Axles & Braking** - every model in the QM range has hydraulic brakes as standard with the option for air brakes with load sensing and ABS. There is also the option for hydraulic load sensing. Our QM-11, QM-12 & QM-1200 models use 8 stud 350 x 90 axles, with the option to upgrade to commercial axles for high-speed road work. Commercial 10 stud 420 x 180 axles are standard on our QM-14 model upwards; these are the same size of axles that are used on HGVs and provide exceptional braking and high-speed performance.



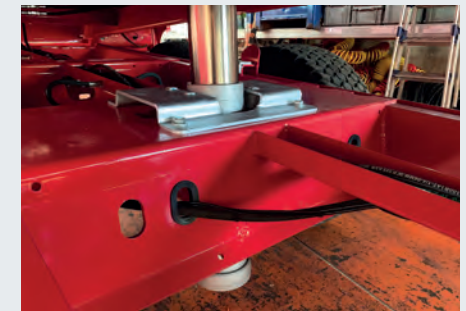
(Model shown: QM-16 side view)



(Model shown: QM-11 side view)



(50mm fully-bushed tip point and rear tow point)



(Single tipping ram)



(Single leaf spring suspension)



(Rocker tandem suspension)

# DESIGNED AROUND YOU WITH A HUGE RANGE OF BUILD OPTIONS

SCAN THE  
CODE TO  
FIND OUT  
MORE »



With so many demands placed on agricultural trailers it is now essential to offer a large range of options and every option we offer has been fully designed, tested and integrated into each model.

**Cereals** - our QM and QM00 range are both ideal for this type of work. The QM00 range has a marginally larger carrying capacity than the QM range with basic sides.

**Silage** - our QM range has two silage side options available, the first is the swinging style silage sides that are available on all models except the QM-1200, QM-1400, QM-1600 and QM-1800. These sides offer the largest silage capacity with higher sides due to the rear gate hinging at the top. The second silage sides option is the hydraulic attachment style sides, which are available on all models and are very efficient to fit and remove. These sides are very strong and rigid due to an internal plate overlapping the standard trailer body. The sides also have excellent clearance due to long hydraulic door arms, ensuring silage does not catch on the door when discharging the load.

**Rootcrop** - the QM models in the range have 4' high sides reducing the distance crops have to fall when loading to minimise potential damage. These models can also be specified with full-width front windows for improved visibility and large floatation wheel options are also available, including 560-60x22.5 and 600-50x22.5 radial floatations.

**Sugar Beet** - QM and QM00 models are suitable for sugar beet work, as all models have reinforced rear doors and single tipping rams with high tip angles, allowing loads to be effectively heaped and graded when discharged.

**Paint Options** - one of our most popular options is a custom paint finish, and we offer 14 different colour options, so that customers have a huge range to choose from. The colours are as follows, Marshall Red, Marshall Blue, Maserati Blue, John Deere Green, Claas Green, Fendt Green, Ferrari Red, Case Red, Kubota Orange, Highway Yellow, JCB Yellow, White, Black and Gunmetal Grey.

**Lighting Options** - LED tail-lights are now standard on all QM models, and high-level LEDs can be added to any model of QM. An LED beacon comes standard on QM-14s and up and can be fitted to any smaller trailer. LED worklights are an option that is offered on the QM-11 and upwards.

**Wheel Options** - certain tyre sizes and brands that we do not offer as a standard option can be requested.

**Dealer Fit** - the entire QM range comes "dealer fit" ready, allowing over 95% of the optional extras to be retrofitted without the need for further fabrication or paint rectification. These can be identified in the specification chart by having (DF-) along with the anticipated number of hours to fit.



(Model shown: QM-1400 front view)



(Model shown: QM-8 swinging style silage sides)



(Model shown: QM-6 front view)



(Tyre options)



(Rear name plate)



(LED light)



# QM MONOCOQUE TRAILER RANGE SPECIFICATIONS & OPTIONAL EQUIPMENT

SCAN THE  
CODE TO  
FIND OUT  
MORE »



	QM-6	QM-8	QM-11	QM-12	QM-1200	QM-14	QM-1400	QM-16	QM-1600	QM-1800
Body Size - Imperial	12' x 7' 3" - 7' 6" x 4'	14' x 7' 3" - 7' 6" x 4'	16' x 7' 6" - 8' x 4'	18' x 7' 6" - 8' x 4'	16' x 7' 6" - 8' x 4' 8"	21' x 7' 6" - 8' x 4'	18' x 7' 6" - 8' x 4' 8"	24' x 7' 6" - 8' x 4'	21' x 7' 6" - 8' x 4' 8"	24' x 7' 6" - 8' x 4' 8"
Standard Tyre Size	12.5 x 15	12.5 x 15	385 - 65 x 22.5	385 - 65 x 22.5	385 - 65 x 22.5	385 - 65 x 22.5	385 - 65 x 22.5	385 - 65 x 22.5	385 - 65 x 22.5	NEW 385-65 x 22.5
Axle	6 Stud 70mm Single Axle	6 Stud 70mm	8 Stud 80mm	8 Stud 80mm	8 Stud 80mm	10 Stud 120mm High Speed Commercial	10 Stud 120mm High Speed Commercial	10 Stud 120mm High Speed Commercial	10 Stud 120mm High Speed Commercial	10 Stud 120mm High Speed Commercial
Brake	300 x 60	300 x 60	350 x 90	350 x 90	350 x 90	420 x 180 S Cam	420 x 180 S Cam	420 x 180 S Cam	420 x 180 S Cam	420 x 180 S Cam
Carrying Capacity	6.5 tons	8.5 tons	11 tons	12 tons	12 tons	14.5 tons	14.5 tons	16.5 tons	16.5 tons	18.5 tons
Floor Thickness	5mm	5mm	5mm	5mm	5mm	5mm	5mm	5mm	5mm	5mm
Side Thickness	3.5mm	3.5mm	3.5mm	4mm	4mm	4mm	4mm	4mm	4mm	4mm
Lights & Hyd Brakes	○	○	○	○	○	○	○	○	○	○
Side Loading Panels	○	○	○	○	○	○	○	○	○	○
Volume Basic	360 cu.ft / 10.2 cu. mtrs	420 cu.ft / 11.9 cu. mtrs	496 cu.ft / 14.4 cu. mtrs	558 cu.ft / 15.8 cu. mtrs	578 cu.ft / 16.3 cu. mtrs	651 cu.ft / 18.4 cu. mtrs	651 cu.ft / 18.4 cu. mtrs	744 cu.ft / 21.1 cu. mtrs	759 cu.ft / 21.5 cu. mtrs	868 cu.ft / 24.5 cu. mtrs
Volume Silage - Swinging Door Style Sides	720 cu.ft / 20.4 cu. mtrs	840 cu.ft / 23.8 cu. mtrs	992 cu.ft / 28.1 cu. mtrs	1116 cu.ft / 31.6 cu. mtrs	N/A	1302 cu. ft / 36.8 cu. mtrs	N/A	1488 cu. ft / 42.1 cu. mtrs	N/A	N/A
Volume Silage - Hyd Door Attach. Style Sides	N/A	710 cu.ft / 20.1 cu. mtrs	889 cu.ft / 24.9 cu. mtrs	999 cu.ft / 28.3 cu. mtrs	971 cu.ft / 27.5 cu. mtrs	1166 cu.ft / 33 cu. mtrs	1092 cu.ft / 31 cu. mtrs	1335 cu.ft / 37.7 cu. mtrs	1274 cu.ft / 36.1 cu. mtrs	1457 cu.ft / 41.2 cu. mtrs
Basic Trailer Weight	1680 kgs	2660 kgs	4300 kgs	4860 kgs	4620 kgs	5700 kgs	5700 kgs	6380 kgs	6380 kgs	6980 kgs
Loading Height Basic	83"/2.11m	89"/2.26m	95"/2.41m	96"/2.44m	104"/2.64m	96"/2.44m	104"/2.64m	98"/2.49m	106"/2.69m	106"/2.69m
Tip Angle (Degrees)	50°	45°	46°	49°	46°	50°	50°	51°	51°	51°
Tip Height (Basic)	N/A	N/A	17' 8"	19' 8"	18' 2"	22' 7"	20' 2"	23' 11"	23' 1"	24' 5"
<b>OPTIONAL EQUIPMENT</b>										
400-60 x 15.5	○ (DF-0.5)	○ (DF-1)	○	○	○	○	○	○	○	○
340-65 x 18 Radial	○ (DF-0.5)	○ (DF-1)	○	○	○	○	○	○	○	○
550-45 x 22.5 c/w Mudguards	○	○	○	○	○	○ (DF-1)	○ (DF-1)	○	○	○
560-45 x 22.5 c/w Mudguards	○	○	○	○	○	○ (DF-1)	○ (DF-1)	○ (DF-1)	○ (DF-1)	○
560-60 x 22.5 c/w Mudguards	○	○	○	○	○	○ (DF-1)	○ (DF-1)	○ (DF-1)	○ (DF-1)	○ (DF-1)
Mudguards/Wings - Bolt On	○	○	○	○	○	○	○	○	○	○
12 inch Hatch	○	○	○	○	○	○	○	○	○	○
Spring Drawbar (Adjustable)	○	○	○	○	○	○	○	○	○	○
Swivel Hitch	○	○	○	○	○	○	○	○	○	○
Hyd Door Safety Valve	○ (DF-1.5)	○ (DF-1.5)	○ (DF-1.5)	○ (DF-1.5)	○ (DF-1.5)	○ (DF-1.5)	○ (DF-1.5)	○ (DF-1.5)	○ (DF-1.5)	○ (DF-1.5)
Hyd Door Seal	○	○	○	○	○	○	○	○	○	○
Hyd Up & Over Grain Door	○	○	○	○	○	○	○	○	○	○
Hyd Door Attachment Style Silage Sides	Standard - When Hyd Grain Door and Silage Sides Specified	Standard - When Hyd Grain Door and Silage Sides Specified	Standard - When Silage Sides Specified (DF-2)	Standard - When Silage Sides Specified (DF-2)	Standard - When Silage Sides Specified (DF-2)	Standard - When Silage Sides Specified (DF-2)	Standard - When Silage Sides Specified (DF-2)	Standard - When Silage Sides Specified (DF-2)	Standard - When Silage Sides Specified (DF-2)	Standard - When Silage Sides Specified (DF-2)
Swinging Door Style Silage Sides	Standard - When Hyd Grain Door Not Specified (DF-3)	Standard - When Hyd Grain Door Not Specified (DF-3)	No-cost Option (DF-3)	No-cost Option (DF-3)	N/A	No-cost Option (DF-3)	N/A	No-cost Option (DF-3)	N/A	N/A
Trailer Cover (640g PVC)	○ (DF-0.25)	○ (DF-0.25)	○ (DF-0.25)	○ (DF-0.25)	○ (DF-0.25)	○ (DF-0.25)	○ (DF-0.25)	○ (DF-0.25)	○ (DF-0.25)	○ (DF-0.25)
Roll Over Cover (1000g PVC)	○ (DF-5)	○ (DF-5)	○ (DF-5)	○ (DF-5)	○ (DF-5)	○ (DF-5)	○ (DF-5)	○ (DF-5)	○ (DF-5)	○ (DF-5)
Hydraulic Front to Back Cover	○	○	○	○	○	○	○	○	○	○
LED Beacon	○ (DF-0.25)	○ (DF-0.25)	○ (DF-0.25)	○ (DF-0.25)	○ (DF-0.25)	○	○	○	○	○
LED Tail Lights	○	○	○	○	○	○	○	○	○	○
High Level LED Lights	○ (DF-1.5)	○ (DF-1.5)	○ (DF-1.5)	○ (DF-1.5)	○ (DF-1.5)	○ (DF-1.5)	○ (DF-1.5)	○ (DF-1.5)	○ (DF-1.5)	○ (DF-1.5)
LED Worklights	○	○	○ (DF-2)	○ (DF-2)	○ (DF-2)	○ (DF-2)	○ (DF-2)	○ (DF-2)	○ (DF-2)	○ (DF-2)
10 Stud 406 x 120 Commercial Axle	○	○	○	○	○	○	○	○	○	○
10 Stud Commercial Axle c/w ABS & Air Brakes	○	○	○	○	○	○ (DF-6)	○ (DF-6)	○ (DF-6)	○ (DF-6)	○ (DF-6)
Rear Steering Axle	○	○	○	○	○	○	○	○	○	○
Air / Oil Brakes (non ABS) c/w Load Sensing	○	○ (DF-4)	○ (DF-4)	○ (DF-4)	○ (DF-4)	○ (DF-4)	○ (DF-4)	○ (DF-4)	○ (DF-4)	○ (DF-4)
Oil Load Sensing	○	○ (DF-2)	○ (DF-2)	○ (DF-2)	○ (DF-2)	○ (DF-2)	○ (DF-2)	○ (DF-2)	○ (DF-2)	○ (DF-2)
Small Perspex Front Window	○ (DF-0.5)	○ (DF-0.5)	○ (DF-0.5)	○ (DF-0.5)	○ (DF-0.5)	○ (DF-0.5)	○ (DF-0.5)	○ (DF-0.5)	○ (DF-0.5)	○ (DF-0.5)
Large Perspex Front Window	○	○	○	○	○	○	○	○	○	○
Rear Tow Hitch c/w Lights and Brakes	○	○ (DF-2)	○ (DF-2)	○ (DF-2)	○ (DF-2)	○ (DF-2)	○ (DF-2)	○ (DF-2)	○ (DF-2)	○ (DF-2)

Scan the QR code above or visit [www.marshall-trailers.co.uk](http://www.marshall-trailers.co.uk) for our retail pricing & full range of options.

**Dealer Fit** ● Standard ○ Optional ● Not Available

**MARSHALL TRAILERS**

PRODUCT BROCHURE 2025

PAGE 13



## HD HYBRID DUMPER TRAILER RANGE





# THE DUMPER DESIGNED FOR EVERY JOB

SCAN THE  
CODE TO  
FIND OUT  
MORE »



The HD hybrid dumper trailer range has been designed to handle a wide variety of different tasks; from shifting muck on a farm to the toughest construction work.

**Muck** - the large cubic capacities and robust build makes the hybrid dumper range ideal for carrying muck. The high tipping angle allows the load to be heaped up when discharged. The tipping mechanism is also very robust; with the HD-12 model upwards utilizing a single ram. This reduces the tipping cycle time by up to 20% obviously making the whole operation safer, faster and ensures less overall wear and tear. In addition the tipping points on larger models are formed by 50mm steel pins.

**Rubble & Stone** - the floors on the HD-6 and HD-8 models are 6mm thick, with the rest of the range benefiting from an 8mm rock floor. The HD-6 and HD-8 models have 5mm sides, with larger models being fitted with 6mm sides. The pressed design of the body further adds to the overall strength and rigidity; ensuring each model can handle rubble, stone or any other heavy material. In addition each model has been designed with a very generous cubic capacity to ensure that the stated loads can actually be carried.

**Multi-purpose Functionality** - the HD-6 and HD-8 models are standard with a scow end and the HD-12 models upwards are standard with a flat-back design. This allows them to be used as traditional dumper trailers, while also being able to have ramps attached for loading small machines inside the body.

**Suspension** - all our tandem axle models are available with rocker or spring suspension as a no-cost option. The HD-16 model utilises our 24-ton commercial spring set when spring suspension is specified.

**Axles & Brakes** - the standard axles and hydraulic brakes on all models exceed the current legislation on braking efficiency. The HD-16 model also has 10 stud 420 x 180 commercial axles as standard; and the HD-12 and HD-14 models can be upgraded to 10 stud 406 x 120 commercial axles for increased braking efficiency. Air brakes are available as an option.

**Tyres** - the standard tyres on the HD-6 and HD-8 models are 12.5 x 15 floatation tyres, which can be upgraded to 340-65 x 18 radial tyres for road work. The larger models in the range, the HD-12 upwards, are equipped with remould 385 - 65 x 22.5 radial tyres, ideal for road work. These can be swapped for floatation tyres as an optional extra.



(Model shown: HD-6 side view)



(Model shown: HD-8 rear view)



(Model shown: HD-12 side view)



(Model shown: HD-14 ramps)



(Model shown: HD-16 single tipping ram)



(Model shown: HD-16 side view)

# ENGINEERED TO LAST

SCAN THE  
CODE TO  
FIND OUT  
MORE »



**Body Design** - the design of the whole HD range is created on our pair of CNC presses to incorporate more folding and less welding. The result is strong and rigid bodies that visually have a very modern design. The floors on the HD-6 and HD-8 are 6mm thick and on all other models are 8mm thick; the sides on the HD-6 and HD-8 are 5mm thick while the HD-12 model upwards have 6mm sides.

**Chassis Design** - heavy duty channels are used to form the chassis on all HD models, with the HD-12 model upwards also benefitting from an 8mm reinforcing plate combined with the channel chassis design. This provides strength where necessary, while also allowing the chassis to flex rather than crack or fail prematurely.

**Tipping Rams** - the HD-6 uses a single tipping ram, the HD-8 utilizes twin rams, and the HD-12, HD-14 and HD-16 have the advantage of using a displacement single ram design.

**Hydraulic Door Design** - the hydraulic door is standard on the HD-12, HD-14 and HD-16 models. It has a generous amount of clearance when open to allow loads to be safely discharged and the rear door panel can be removed to allow the trailer to be used for bulky materials that would otherwise catch on the door. The hydraulic door is available as an option on the HD-6 and HD-8 models, which are designed to allow the door to be "dealer fitted" at any point.

**Stone Guard** - the HD range comes with a standard stone guard galvanised at the front to help protect the tractor operator and the tractor itself from debris. It is formed by our CNC machines and is bolt-on allowing it to be replaced if it is damaged or completely removed for better visibility.



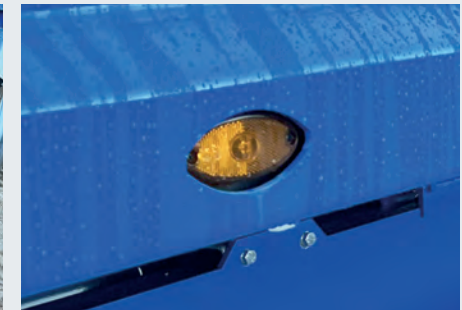
(Hydraulic door)



(Tapered mudguards)



(Side crash barriers)



(Side marker lights)



# HD HYBRID DUMPER TRAILER RANGE SPECIFICATIONS & OPTIONAL EQUIPMENT

SCAN THE  
CODE TO  
FIND OUT  
MORE »



	HD-6	HD-8	HD-12	HD-14	HD-16
Body Size - Imperial	11' 6" x 6' 6" x 1' 9"	14' x 7' 9" x 1' 9"	16' x 7' 9" x 2'	16' x 7' 9" x 2' 6"	16' x 7' 9" x 3'
Body Shape	Scow-end	Scow-end	Flat-back	Flat-back	Flat-back
Standard Tyre Size	12.5 x 15 - 14 ply	12.5 x 15 - 14 ply	385 - 65 x 22.5	385 - 65 x 22.5	385 - 65 x 22.5
Axle	70mm 6 stud	70mm 6 stud Tandem	80mm 8 stud Tandem	80mm 8 stud Tandem	120mm 10 stud Tandem
Brake	300 x 60	300 x 60	350 x 90	350 x 90	420 x 180 S Cam
Carrying Capacity	6 tons	8 tons	12.5 tons	14.5 tons	16.5 tons
Floor Thickness (Rock)	6mm	6mm	8mm	8mm	8mm
Side Thickness	5mm	5mm	6mm	6mm	6mm
Lights and Hyd Brakes	○	○	○	○	○
Volume Basic	131 cu. ft / 3.7 cu. mtrs	190 cu. ft / 5.4 cu. mtrs	247 cu. ft / 7 cu. mtrs	307 cu. ft / 8.7 cu. mtrs	370 cu. ft / 10.5 cu. mtrs
Basic Trailer Weight	1760 kgs	2990 kgs	4920 kgs	5140 kgs	5540 kgs
Loading Height	60"	62"	71"	77"	83"
Tip Angle (Degrees)	55°	60°	60°	60°	60°
OPTIONAL EQUIPMENT					
400-60 x 15.5	○ (DF-0.5)	○ (DF-1)	○	○	○
340-65 x 18 Radial	○ (DF-0.5)	○ (DF-1)	○	○	○
445 x 45 x 19.5 (Lowers bed height by 75mm)	○	○	○	○	○
550-45 x 22.5 c/w Mudguards	○	○	○	○	○
560-45 x 22.5 c/w Mudguards	○	○	○	○	○
Mudguards / Wings - Bolt On	○	○	○	○	○
Spring Drawbar (Adjustable)	○	○	○	○	○
Hydraulic Tail Door	○ (DF-3)	○ (DF-3)	Standard - Removable	Standard - Removable	Standard - Removable
Hyd Door Safety Valve	○ (DF-1.5)	○ (DF-1.5)	○ (DF-1.5)	○ (DF-1.5)	○ (DF-1.5)
Trailer Cover (640g PVC)	○ (DF-1)	○ (DF-1)	○ (DF-1)	○ (DF-1)	○ (DF-1)
Hydraulic Front to Back Cover	○	○	○	○	○
LED Beacon	○ (DF-0.25)	○ (DF-0.25)	○ (DF-0.25)	○ (DF-0.25)	○ (DF-0.25)
LED Tail Lights	○	○	○	○	○
LED Worklights	○	○	○ (DF-2)	○ (DF-2)	○ (DF-2)
10 Stud Commercial Axle 406 x 120	○	○	○	○	○
10 Stud Commercial Axle c/w ABS & Air Brakes	○	○	○	○	○ (DF-6)
Air / Oil Brakes c/w Load Sensing	○	○ (DF-4)	○ (DF-4)	○ (DF-4)	○ (DF-4)
Rear Tow Hitch c/w Lights and Brakes	○	○ (DF-2)	○ (DF-2)	○ (DF-2)	○ (DF-2)
Rear Ramps (Aluminium)	○	○	○ (DF-0.25)	○ (DF-0.25)	○ (DF-0.25)

Scan the QR code above or visit [www.marshall-trailers.co.uk](http://www.marshall-trailers.co.uk) for our retail pricing & full range of options.

Dealer Fit ● Standard ○ Optional ● Not Available

MARSHALL TRAILERS

PRODUCT BROCHURE 2025  
PAGE 17

## BC FLATBED TRAILER RANGE





# STRONG AS STANDARD WITH ALL THE FINISHING TOUCHES

SCAN THE  
CODE TO  
FIND OUT  
MORE »



The entire BC range is manufactured using modern techniques and materials for a robust and heavy-duty build. This is combined with a number of small details and standard features to produce trailers that are not only strong, but practical and user-friendly.

**Chassis Design** - every model benefits from heavy-duty channels to form a square chassis design that improves rigidity and reduces flexing during loading.

**Bed Design** - the entire range has a 4mm thick chequered plate steel floor as standard to prevent loads from moving during transit. The side rails are folded out of 6mm plate and the floor bearers are all box section for strength.

**21" Fixed Headboard** - standard on all models this feature dramatically increases strength and rigidity to reduce flexing when loading.

**Harvest Ladders** - standard front and rear ladders on all models, with a galvanized finish to provide effective protection. The rear harvest ladders on all models are designed to be adjustable between straight and angled positions, depending on the shape of the bales being transported.

**Lighting** - every model in the range has LED lights as standard that are recessed into the back rail of the trailer to provide additional protection. In addition on the BC-25-12T model upwards side marker lights and a detachable electrical suzi are standard features.

**Rear Crash Barrier** - standard on all models the crash barrier is formed from box section and can be folded away or removed if preferable.

**Rope Hooks & Strap Points** - every model has heavy duty 5/8" rope hooks along each side and at both the front and the back. In addition the side rail of the BC range integrates strapping points for ratchet straps ensuring efficient and safe strapping down of loads to comply with current legislation.

**Rear Toolbox** - this simple toolbox is recessed into the back rail of our trailers to ensure it is protected and comes standard with a strap-winder to make tidying up and storing straps easier than ever.



(Model shown: BC-25-10T front view)



(Model shown: BC-28 side view)



(Model shown: BC-25-12T side view)



(Hydraulic hose identifiers, hose protector and detachable electrical suzi)



(Model shown: BC-21 side view)



(Rear toolbox and strap winder)

# ALL THE OPTIONS TO MAKE YOUR TRAILER DO MORE

SCAN THE  
CODE TO  
FIND OUT  
MORE »



There are a huge range of options available on the BC range, including axle and brake upgrades to ensure the correct running gear can be matched to customer requirements including our easy secure bale clamp system.

**Suspension** - the normal suspension offered on our bale trailer range is our split-oscillating suspension, which reduces lateral movement and improves stability of high loads. Spring suspension, if preferred, is also available for high-speed road work as a no-cost option.

**Axles & Brakes** - the standard axles on all our models are more than adequate for most jobs. However commercial 10 stud axles can be specified to provide high-speed performance and enhanced braking.

**Tyres** - it is possible to upgrade the tyres of our entire BC range to better handle different jobs. Tyres available include miniature super singles, low and wide 445-45 x 19.5 tyres to reduce the bed height and a variety of floatation tyres. Study the specification chart on page 21 to see the available tyre options for each model. Further information on tyre performance is available on page 44.

**Easy Secure** - this unique load securing system fits to the BC-25-12T model upwards and can be used to secure a variety of loads from bales and boxes to fertiliser bags. The system incorporates two hydraulically lifted bars that rise, to either 2.3m or 3.1m from the trailer bed and pull a pair of heavy-duty securing nets into place on either side of the trailer, reducing the need for strapping and further tying down of cargo. There are several benefits to this design, using nets instead of a complicated steel frame reduces the chance of damage and keeps the trailer's centre of gravity lower for better stability. In addition, when the nets are folded down integrated bungee cords fold the net up allowing the trailer to be moved or unhitched even when in the lowered position.

**Boxes** - If the trailer is to be used to harvest root crop vegetables into boxes then the rear hydraulic box pusher would be a great addition to save time strapping boxes to the trailer. Another thing that can be added that would benefit this type of work is our hydraulic side walkway. This can be fitted to either side of the trailer and can be easily folded down when not in use allowing the trailer to be very versatile.

**Ramps** - optional ramp bars can be fitted to the back rail of the trailer and aluminium ramps can be fitted allowing the trailer to be used to transport machines.



(Model shown: BC-28, 2.3m easy secure)



(Model shown: BC-32-TRI, 3.1m easy secure)



(Rear integrated lights, box pusher and hydraulic side step)



(340 - 65 x 18 "Miniature Super-singles")



(560 - 45 x 22.5 radial floatations)



# BC FLATBED TRAILER RANGE SPECIFICATIONS & OPTIONAL EQUIPMENT

SCAN THE  
CODE TO  
FIND OUT  
MORE »



	BC-21	BC-25 - 10 ton	BC-25 - 12 ton	BC-28	BC-32 - TAN	BC-32 - TRI	BC-36 - TAN	BC-36 - TRI
Body Size	21' x 8' / 6.40m x 2.43m	25' x 8' / 7.62m x 2.43m	25' x 8' 4" / 7.62m x 2.54m	28' x 8' 4" / 8.53m x 2.54m	32' x 8' 4" / 9.75m x 2.54m	32' x 8' 4" / 9.75m x 2.54m	36' x 8' 4" / 10.97m x 2.54m	36' x 8' 4" / 10.97m x 2.54m
Standard Tyre Size	12.5 x 15 - 14 ply	12.5 x 15 - 14 ply	385 - 65 x 22.5	385 - 65 x 22.5	385 - 65 x 22.5	385 - 65 x 22.5	385 - 65 x 22.5	385 - 65 x 22.5
Axle	70mm 6 stud Tandem	70mm 6 stud Tandem	80mm 8 stud Tandem	80mm 8 stud Tandem	80mm 8 stud Tandem	90mm 10 stud Tridem	10 stud 120mm High Speed Commercial Tandem	10 stud 120mm High Speed Commercial Tridem
Brakes	300 x 60	300 x 60	350 x 90	350 x 90	350 x 90	406 x 120	420 x 180	420 x 180
Carrying Capacity	10 tons	10 tons	12 tons	14 tons	14 tons	16 tons	16 tons	16 tons
Floor Thickness (Steel) Durabar	4mm	4mm	4mm	4mm	4mm	4mm	4mm	4mm
Lights and Hyd Brakes	○	○	○	○	○	○	○	○
Headboard	Standard - 21"	Standard - 21"	Standard - 21"	Standard - 21"	Standard - 21"	Standard - 21"	Standard - 21"	Standard - 21"
Harvest Ladders - Galvanized	Front and Adjustable Rear Standard	Front and Adjustable Rear Standard	Front and Adjustable Rear Standard	Front and Adjustable Rear Standard	Front and Adjustable Rear Standard	Front and Adjustable Rear Standard	Front and Adjustable Rear Standard	Front and Adjustable Rear Standard
Unladen Weight	2030 kgs	2340 kgs	3320 kgs	3840 kgs	4075 kgs	4475 kgs	4935 kgs	5335 kgs
Loading Height	38" / 0.96m	39" / 0.99m	47" / 1.19m	47" / 1.19m	47" / 1.19m	47" / 1.19m	47" / 1.19m	47" / 1.19m
Chassis Members	200mm PFC	200mm PFC	UPN 260mm	UPN 260mm	UPN 300mm	UPN 300mm	UPN 300mm	UPN 300mm
OPTIONAL EQUIPMENT								
400-60 x 15.5	○ (DF-1)	○ (DF-1)	○	○	○	○	○	○
340-65 x 18 Radial	○ (DF-1)	○ (DF-1)	○	○	○	○	○	○
385-65 x 22.5 fitted to 8 stud	○	○	○	○	○	○	○	○
445-45 x 19.5 (Lowers bed height by 150mm)	○	○	○	○	○	○	○	○
550-45 x 22.5	○	○	○ (DF-1)	○ (DF-1)	○ (DF-1)	○ (DF-1.5)	○ (DF-1)	○ (DF-1.5)
560-45 x 22.5	○	○	○ (DF-1)	○ (DF-1)	○ (DF-1)	○ (DF-1.5)	○ (DF-1)	○ (DF-1.5)
560-60 x 22.5 c/w 10 stud 420 x 180 Axles	○	○	○	○	○	○	○ (DF-1)	○ (DF-1.5)
Front Mudflaps	○ (DF-1)	○ (DF-1)	○ (DF-1)	○ (DF-1)	○ (DF-1)	○ (DF-1)	○ (DF-1)	○ (DF-1)
Spring Drawbar	○	○	○	○	○	○	○	○
LED Beacon	○ (DF-0.25)	○ (DF-0.25)	○ (DF-0.25)	○ (DF-0.25)	○ (DF-0.25)	○ (DF-0.25)	○ (DF-0.25)	○ (DF-0.25)
Rear Toolbox c/w Strap Winder	○ (DF-1)	○ (DF-1)	○ (DF-1)	○ (DF-1)	○ (DF-1)	○ (DF-1)	○ (DF-1)	○ (DF-1)
LED Tail Light	○	○	○	○	○	○	○	○
10 Stud Commercial Axle 406 x 120	○	○	○	○	○	○	○	○
10 Stud Commercial Axle c/w ABS Brakes	○	○	○	○	○	○	○	○
Air / Oil Brakes c/w Load Sensing	○ (DF-4)	○ (DF-4)	○ (DF-4)	○ (DF-4)	○ (DF-4)	○ (DF-6)	○ (DF-4)	○ (DF-6)
Oil Load Sensing	○ (DF-2)	○ (DF-2)	○ (DF-2)	○ (DF-2)	○ (DF-2)	○ (DF-2)	○ (DF-2)	○ (DF-2)
Rear Box Pusher	○ (DF-2.5)	○ (DF-2.5)	○ (DF-2.5)	○ (DF-2.5)	○ (DF-2.5)	○ (DF-2.5)	○ (DF-2.5)	○ (DF-2.5)
Hydraulic Side Walkway (per side)	○	○ (DF-5)	○ (DF-5)	○	○ (DF-5)	○ (DF-5)	○ (DF-5)	○ (DF-5)
Easy Secure System 2.3m	○	○	○ (DF-8)	○ (DF-8)	○ (DF-8)	○ (DF-8)	○ (DF-8)	○ (DF-8)
Easy Secure System 3.1m	○	○	○	○	○	○	○	○
Rear Ramps (Aluminium)	○ (DF-0.25)	○ (DF-0.25)	○ (DF-0.25)	○ (DF-0.25)	○ (DF-0.25)	○ (DF-0.25)	○ (DF-0.25)	○ (DF-0.25)
Extra Foot of Flooring	○	○	○	○	○	○	○	○

Scan the QR code above or visit [www.marshall-trailers.co.uk](http://www.marshall-trailers.co.uk) for our retail pricing & full range of options.

Dealer Fit ● Standard ○ Optional ● Not Available

MARSHALL TRAILERS

PRODUCT BROCHURE 2025  
PAGE 21

## LL LOW LOADER RANGE





# ONE TRAILER; TWO JOBS

SCAN THE  
CODE TO  
FIND OUT  
MORE »



**Variants** - the Low Loader is available in two sizes the LL26-TAN a 26ft tandem axle with a 16 ton capacity & the LL33-TRI 33ft tri axle with a 21 ton capacity. Both come with an 8ft hydraulic beaver tail at the rear, this design makes it ideal for use as both a bale trailer and a low loader.

**Locking Mechanism and Burst Valves** - the rear ramp is manually locked into place for transportation with the use of the handle at the rear and the hydraulic rams are fitted with burst valves for safety.

**Bed Design** - made up of a steel ramp & timber flooring the ramp is complete with rear gripper bars for extra traction when loading machines. 50mm thick timber is used for the main floor and is treated for a long service life.

**Securing Points** - all models have lash points recessed into the top side rail, chain points on the siderails along with strap and hook rope points on the underside to make sure all loads can be properly secured.

**Running Gear** - 420 x 180 120mm commercial axles are standard and commercial spring sets are fitted with a 24-ton or 32-ton capacity, depending on the model. The LL-26-TAN is set up with tandem axles and the LL-33-TRI is set up with tridem axles.

**Wheels** - fitted with the 445-45 x 19.5 low profile wheels for a low bed height, while also retaining reasonable ground clearance and floatation.

**Chassis Design** - the chassis is formed from a 260mm deep UPN channel with an 8mm faceplate for unmatched strength and rigidity.



(Model shown: LL26-TAN loaded)



(Rear ramp)



(LL top lash point)



(LL lift rams & extension ramps storage)



(Model shown: LL26-TAN rear view)



(LL running gear)

# THE FEATURES YOU WANT FOR THE TRAILER YOU NEED

SCAN THE  
CODE TO  
FIND OUT  
MORE »



**Lighting** - LED lights, dual LED beacons and LED side marker lights are all fitted as standard for excellent visibility.

**Toolboxes** - both models are standard with galvanised toolboxes, one on either side and standard with a strap winder to speed up storing straps.

**Fixed Headboard & Bucket Plates** - all models are standard with a fixed headboard for rigidity and plates at the front of the trailer for securing buckets or attachments.

**Access Steps** - chequered plate access steps are mounted on the front and rear for easy access to the trailer bed.

**Paint Finish** - shot-blasted as standard and finished with a two pack undercoat and top-coat.

**Protection** - side protection and hi-vis tape come as standard on the low loader ensuring you are seen. Galvanised side crash barriers with reflective tape are standard for improved safety.

**Clip-On Ramps** - the trailer is provided with slot-in ramps to reduce the initial step at the bottom of the ramps to ensure the low loader can carry any equipment that you may need such as telehandlers, excavators or rollers.



(LL side toolbox & crash barrier)



(Model shown: LL26-TAN loaded)



(LL rear lights)



(LL side lash point)



(LL front bucket plate)



(Rear ramp spool valve)



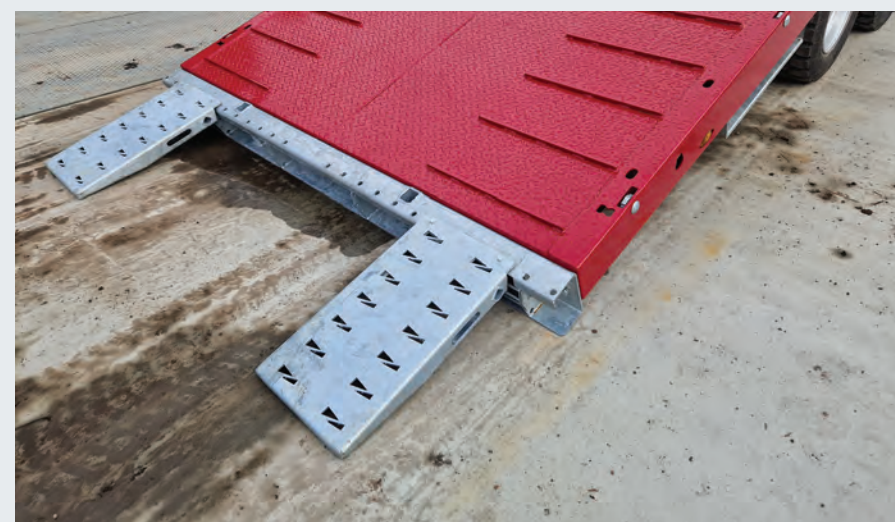
# LL LOW LOADER TRAILER RANGE SPECIFICATIONS & OPTIONAL EQUIPMENT

SCAN THE  
CODE TO  
FIND OUT  
MORE »



	LL-26-TAN	LL33-TRI
Body Size	26' x 8' 4" - 8' Beaver Tail	33' x 8' 4" - 8' Beaver Tail
Standard Tyre Size	445 - 45 x 19.5	445 - 45 x 19.5
Axle	10 stud 120mm High Speed Commercial	10 stud 120mm High Speed Commercial
Brakes	420 x 180 S Cam	420 x 180 S Cam
Spring Drawbar	○	○
Carrying Capacity	16 tons	21 tons
Floor Thickness (Timber)	50mm Treated Timber	50mm Treated Timber
Lights	LED Lights, Dual LED Beacons, LED Side Marker Lights, Number Plate Light	LED Lights, Dual LED Beacons, LED Side Marker Lights, Number Plate Light
Brakes	Hyd Brakes	Hyd Brakes
Headboard	Standard - 19"	Standard - 19"
Toolboxes	Dual Toolboxes	Dual Toolboxes
Harvest Ladders - Galvanised	○	○
Unladen Weight	4540 kgs	6280 kgs
Loading Height	39" / 0.99m	39" / 0.99m
Chassis Members	UPN 260mm	UPN 260mm
<b>OPTIONAL EQUIPMENT</b>		
Front Mudflaps	○ (DF-1)	○ (DF-1)
10 Stud Commercial Axle c/w ABS Brakes	○ (DF-6)	○ (DF-6)
Air / Oil Brakes c/w Load Sensing	○ (DF-4)	○ (DF-4)
Oil Load Sensing	○ (DF-2)	○ (DF-2)
Harvest Ladders - Galvanized (pair)	○ (DF-0.25)	○ (DF-0.25)
Spool Valve Rear NS Ramp	○	○

Scan the QR code above or visit [www.marshall-trailers.co.uk](http://www.marshall-trailers.co.uk) for our retail pricing & full range of options.



(Clip-on ramps)

Dealer Fit ● Standard ○ Optional ● Not Available

**MARSHALL TRAILERS**

PRODUCT BROCHURE 2025  
PAGE 25



## LST LIVESTOCK CONTAINER RANGE





# THE ULTIMATE WAY FOR LIVESTOCK TO TRAVEL

SCAN THE  
CODE TO  
FIND OUT  
MORE »



**Design** - the livestock trailer uses a fully-welded steel construction for strength and rigidity. The trailer also uses a fully sheeted solid roof with gutters to prevent any water flowing into the trailer.

**Safety & Security** - galvanised slam shut gates make your life easier by automatically locking when closed to keep livestock in place. The addition of a safe space at the left-hand side of the gate allows you a place to stand when opening or closing the internal gate. This is obviously beneficial when it comes to moving the livestock as it gives you more protection.

**Air Circulation** - galvanised vent covers have been used to reduce weather ingress while allowing adequate ventilation.

**Cleaning Out** - fitted with a slurry tank as standard the large valve allows the tank to be emptied with ease. This combined with the front access hatch makes it easy to clean the trailer front to back.

**Paint** - is an important factor when dealing with animals that produce corrosive waste this is one of the main reasons the whole trailer is shot-blasted and finished with a two-pack polyurethane undercoat and topcoat.



(Model shown: LST-32 rear view)



(Model shown: LST-32 front view)



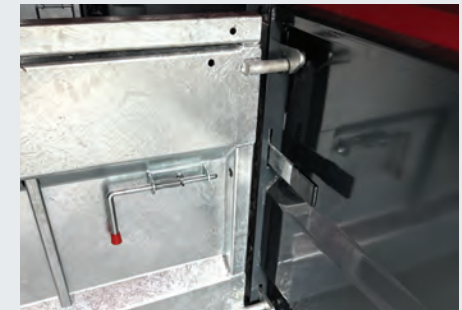
(Sheep deck internal gate)



(Slurry trap)



(Slurry tank valve)



(Slam shut gate)

# NO MORE HEAVY LIFTING

SCAN THE  
CODE TO  
FIND OUT  
MORE »



**Loading Livestock** - we use an aluminium chequered plate rear ramp with two helper springs for easy loading. In addition the rear gates are made from aluminium and have gas-struts to make them light and user-friendly to open and close.

**Hydraulic Sheep Decks** - these are a new option on the Marshall livestock trailers designed to make life easier. The decks are operated with the use of a hydraulic spool valve this allows the deck to rise when loaded with sheep. These are fitted with a mechanical lock and are paired with burst valves in the hydraulic system to avoid a crush.

**Ease of Operation** - simply lower the entire deck down to the floor of the container, load the sheep in, close-up the slam-shut gates and lift the entire deck back up into position. This drastically reduces manual work and allows more sheep to be loaded onto the deck; there isn't any space lost at the rear for ramps.

**Quick Escape** - for extra safety a front escape hatch can be added to the trailer to allow escape from agitated livestock when loading.

**Lighting** - optional internal loading lights can be added to improve visibility inside the trailer, these are controlled via a remote control.



(Rear gates gas strut)



(Rear ramps lowered)



(Safety catch)



(Hydraulic spool valve)



(Escape hatch)



(Sheep decks)



# LST LIVESTOCK CONTAINER RANGE SPECIFICATIONS & OPTIONAL EQUIPMENT

SCAN THE  
CODE TO  
FIND OUT  
MORE »



	LST-21	LST-25	LST-28	LST-32
Body Size	21' x 8' 4" / 6.4m x 2.54m	25' x 8' 4" / 7.62m x 2.54m	28' x 8' 4" / 8.53m x 2.54m	32' x 8' 4" / 9.75m x 2.54m
Standard Tyre Size	385 - 65 x 22.5	385 - 65 x 22.5	385 - 65 x 22.5	385 - 65 x 22.5
Axle	80mm 8 stud Tandem	80mm 8 stud Tandem	80mm 8 stud Tandem	10 stud 120mm High Speed Commercial
Brakes	350 x 90	350 x 90	350 x 90	420 x 180 S Cam
Carrying Capacity	12 tons	12 tons	12 tons	14 tons
Floor Thickness (Steel) Durabar	4mm	4mm	4mm	4mm
Lights & Hyd Brakes	LED Standard / Standard	LED Standard / Standard	LED Standard / Standard	LED Standard / Standard
Internal Loading Height	6' 7" / 2.01m	6' 7" / 2.01m	6' 7" / 2.01m	6' 7" / 2.01m
Internal Cattle / Sheep Divisions	1	2	2	3
Slurry Trap	○	○	○	○
<b>OPTIONAL EQUIPMENT</b>				
445-45 x 19.5 (Lowers bed height by 150mm)	○	○	○	○
Front Mudflaps	○ (DF-1)	○ (DF-1)	○ (DF-1)	○ (DF-1)
Spring Drawbar	○	○	○	○
LED Beacon	○ (DF-0.25)	○ (DF-0.25)	○ (DF-0.25)	○ (DF-0.25)
10 Stud Commercial Axle 406 x 120	○	○	○	○
10 Stud Commercial Axle 420 x 180	○	○	○	○
10 Stud Commercial Axle c/w ABS Brakes	○	○	○	○
Air / Oil Brakes c/w Load Sensing	○ (DF-4)	○ (DF-4)	○ (DF-4)	○ (DF-4)
Oil Load Sensing	○ (DF-2)	○ (DF-2)	○ (DF-2)	○ (DF-2)
LED Tail Light	○ (DF-0.5)	○ (DF-0.5)	○ (DF-0.5)	○ (DF-0.5)
Front Escape Hatch	○	○	○	○
Hydraulic Sheep Decks	○	○	○	○

Scan the QR code above or visit [www.marshall-trailers.co.uk](http://www.marshall-trailers.co.uk) for our retail pricing & full range of options.

Dealer Fit ● Standard ○ Optional ● Not Available

**MARSHALL TRAILERS**

PRODUCT BROCHURE 2025  
PAGE 29

## FT FEED TRAILER RANGE





# FT FEED TRAILER RANGE SPECIFICATIONS & OPTIONAL EQUIPMENT

SCAN THE  
CODE TO  
FIND OUT  
MORE »



	FT-15	FT-20
Length	15' x 5' 6"	20' x 5' 6"
Feed Spaces	32	40
Loading Height	62"	62"
Sides	3mm Steel	4mm Steel
Front	5mm Steel	5mm Steel
Axles	6 stud 70mm	6 stud 70mm
Tyres	12.5 x 15 - 14 ply	12.5 x 15 - 14 ply
Unladen Weight	840 kgs	1080 kgs
Retractable Drawbar	○	○
Swinging Removable Taildoor	○	○
<b>OPTIONAL EQUIPMENT</b>		
Jack Screw in lieu of Skid	○ (DF-0.5)	○ (DF-0.5)
Tombstone Sides	○	○
Removable Seating	○ (DF-2)	○ (DF-2)

**Full Opening Removable Rear Door** - allows feed trailers to be easily cleaned out.

**Retractable Drawbar** - maximizes number of available feed spaces.

**Axles** - new 6 stud 70mm beam axles are used on both models in the range.

**Construction** - tapered sides to allow for easy feeding. Every model also benefits from a fully welded steel construction with 5mm ends and 3mm or 4mm sides. The majority of the fabrication work is also carried out on our robot welders for a consistent, high-quality finish.

**Floor** - the entire range has 30mm treated pine floors, which allows effluent to escape and can easily be replaced when worn out.



(Model shown: FT-15 front view)



(Model shown: FT-15 tombstone sides)



(Model shown: FT-15 rear view)



(Model shown: FT-20 rear view)

Scan the QR code above or visit [www.marshall-trailers.co.uk](http://www.marshall-trailers.co.uk) for our retail pricing & full range of options.

Dealer Fit ● Standard ○ Optional ● Not Available

**MARSHALL TRAILERS**

PRODUCT BROCHURE 2025  
PAGE 31



## PC PEOPLE CARRIER RANGE





# PC PEOPLE CARRIER RANGE SPECIFICATIONS & OPTIONAL EQUIPMENT

SCAN THE  
CODE TO  
FIND OUT  
MORE »



**Seating** - coming as standard with 27 seats complete with road legal belts and buckles our people carrier is great at moving people around farms, shows, wildlife centres and more. The seats themselves come fully galvanised as standard in order to prevent corrosion and provide a long service life.

**Access** - easily step up into the Marshall people carrier with a low level access step complete with safety gate. The chequered plate floor is also coated with a non slip paint to help prevent slips and falls when embarking or disembarking the trailer. We can also provide a disabled access ramp in order to make the people carrier suitable for all.

**Weather Resistant** - the heavy duty PVC cover provided as standard helps the occupants keep covered from the elements. We can also provide side window covers to help prevent rain ingress.

**Brakes** - as standard the carrier comes with hydraulic brakes to meet road regulations. Air / Oil Load Sensing or Oil Load Sensing are also available as options.

**Comfort** - the carrier comes with spring suspension for a smooth ride. This combined with the brakes lighting and seating makes the trailer fully road legal for passenger carriage.

**Lighting** - equipped with LED Lights as standard these exceed current legislation and help you be seen on the road.

PC-21		
Body Size	21' x 8' / 6.40m x 2.43m	
Standard Tyre Size	10.0 x 15 - 14 ply	
Axle	70mm 6 stud Tandem	
Suspension	Springs	
Brakes	300 x 60	
Carrying Capacity	6 tons	
Floor Thickness (Steel Durabar)	4mm	
Lights & Hyd Brakes	○	
Unladen Weight	2630 kgs	
Loading Height	36"	
Chassis Members	200mm PFC	
OPTIONAL EQUIPMENT		
400-60 x 15.5	○	(DF-1)
340 x 65 x 18 Radial	○	(DF-1)
Spring drawbar	○	
LED Beacon	○	(DF-0.25)
Rear Toolbox	○	(DF-1)
LED Tail Light	○	
Air / Oil Brakes c/w Load Sensing	○	(DF-4)
Oil Load Sensing	○	(DF-2)

Scan the QR code above or visit [www.marshall-trailers.co.uk](http://www.marshall-trailers.co.uk) for our retail pricing & full range of options.



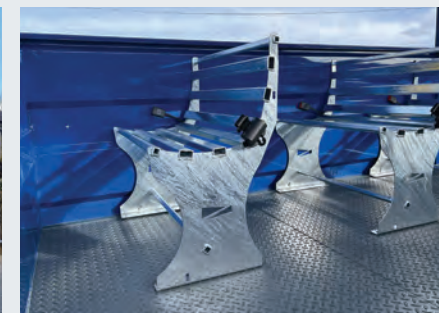
(Model shown: PC-21 side view)



(Model shown: PC-21 rear view)



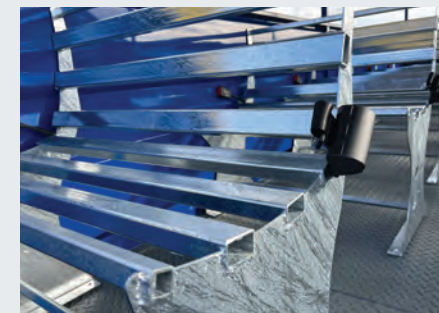
(Disabled access ramp in storage location)



(Model shown: PC-21 interior)



(Low level access step and safety gate)



(Fully galvanised seats, road legal belts and buckles)

Dealer Fit ● Standard ● Optional ● Not Available

MARSHALL TRAILERS

PRODUCT BROCHURE 2025  
PAGE 33



## MS MUCK SPREADER RANGE

---





# THE STRENGTH AND DESIGN TO LAST

SCAN THE  
CODE TO  
FIND OUT  
MORE »



Our legendary MS range has been developed over forty years of producing muck spreaders; with a number of unique design features and durable construction the MS range continues to be the industry leading spreader.

**Barrel Design** - the barrels on all models are fully welded and are either 4mm thick on our MS-60 and MS-75 models or 4.5mm thick on our larger models. The ends on all models are also heavy-duty with 6mm thick ends to provide an excellent service life.

**Chassis Design** - an integral chassis design has been part of the Marshall spreader for over thirty years. It removes any stress on the barrel of the spreader to prevent premature fatigue or cracking.

**Lid Design** - every model in the range benefits from a stainless steel lid ram to eliminate corrosion. Our lids open to 89°, allowing easy loading and reducing the possibility of damage.

**Brakes & Lights** - brakes and lights come as standard on all models. This ensures all our spreaders comply with both highway and health & safety regulations.

**Sprockets** - all sprockets are machined steel, not cast, and located by a 10 pitch spline to maximize service life. In addition the gearing of the sprockets on all of our spreaders has been selected to provide the optimum spread.

**Bearings** - we only use plumber block bearings, which allows all our bearings to be placed away from corrosive slurry to limit potential damage.

**Rotor Shaft** - every model benefits from a round perfectly balanced rotor shaft with chains mounted on four sides, any engineer would agree a round shaft is easier to balance. Heavy-duty starter flails allow the spreader to easily start and quickly achieve the optimum spreading speed.

**Chains** - the chains on every model are 13 or 14mm thick and case hardened to greatly reduce wear. The heads are also welded on, not just held on with a pin or bolt. Large 3" x 2.5" heads and a substantial number of flail chains ensure a fast, efficient spread rate.

**Wheel Options** - the Axles on all models are designed to bolt on allowing a huge range of wheel options such as 16/70 x 20 track tread wheels and 550-60-22.5 floatation wheels



(Model shown: MS-75 side view)



(Model shown: MS-105 side view)



(Recessed lights)



(Angled loading lip)



(Flail chains)



(Drive chain)

# MS MUCK SPREADER RANGE SPECIFICATIONS & OPTIONAL EQUIPMENT

SCAN THE  
CODE TO  
FIND OUT  
MORE »

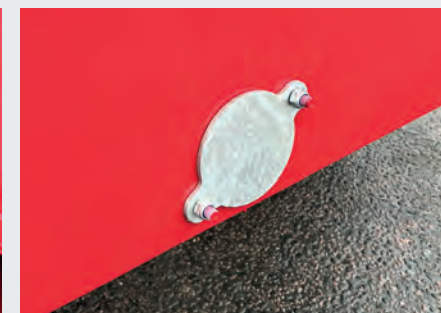


	MS-60	MS-75	MS-90	MS-105
Standard Tyre Size	12.5 x 15 - 14 ply	385 - 65 x 22.5	385 - 65 x 22.5	550 - 60 x 22.5
Axle	70mm 6 stud	70mm 6 stud	70mm 6 stud	80mm 8 stud
Brakes	300 x 60	300 x 60	300 x 60	350 x 90
Volume Capacity	6 cu. yds / 4.6 cu. mtrs / 1000 gal	7.5 cu. yds / 5.7 cu. mtrs / 1250 gal	9 cu. yds / 6.9 cu. mtrs / 1500 gal	10.5 cu. yds / 8 cu. mtrs / 1750 gal
Hydraulic Brakes	○	○	○	○
Hydraulic Lid	○	○	○	○
Drum Thickness	4mm	4mm	4.5mm	4.5mm
Ends	6mm	6mm	6mm	6mm
Case Hardened Chain Flails	1/2" / 13mm	1/2" / 13mm	9/16" / 14mm	9/16" / 14mm
Flail Chain - Quantity	28	28	36	40
HP Requirements	55	65	85	95
End Height	73"	81"	82"	82"
Loading Height	51"	58"	59"	62"
Body Dimension	10' x 54"	10' x 57"	12' x 60"	14' x 60"
Lights	○	○	○	○
Basic Spreader Weight	1330 kgs	1680 kgs	2060 kgs	2280 kgs
<b>OPTIONAL EQUIPMENT</b>				
Slurry Bib 8 inch Deep - Galvanized	○ (DF-0.5)	○ (DF-0.5)	○ (DF-0.5)	○ (DF-0.5)
16/70 x 20 Track Tread	○ (DF-0.5)	○ (DF-0.5)	○ (DF-0.5)	○
550 - 60 x 22.5 fitted to 8 stud	○	○ (DF-2)	○ (DF-2)	○
Jack Screw in lieu of Skid	○	○	○	○
LED Tail Lights	○ (DF-0.5)	○ (DF-0.5)	○ (DF-0.5)	○ (DF-0.5)

Scan the QR code above or visit [www.marshall-trailers.co.uk](http://www.marshall-trailers.co.uk) for our retail pricing & full range of options.



(Bearing mounting)



(Drain plug)



(PTO stand)



(Vertically opening lid)

Dealer Fit ● Standard ○ Optional ● Not Available

**MARSHALL TRAILERS**

PRODUCT BROCHURE 2025  
PAGE 36



## VES REAR-DISCHARGE SPREADER RANGE





# THE ULTIMATE SPREADER - NO FLOOR CHAINS = NO PROBLEMS

SCAN THE  
CODE TO  
FIND OUT  
MORE »



The Marshall VES range is the next step forward in the design of rear-discharge spreaders, eliminating the problematic floor chain set-up and associated maintenance requirements. This is only possible due to the patented hydraulic pushing ram that is fully speed controllable with a user-friendly electronic control system. Combined with the heavy-duty construction and over-specified components the VES range is ready for the toughest challenges.

**Maintenance** - the only regular maintenance required on our VES range is to grease the bearings via remote grease points and to check the oil level in the gearbox. We use a bespoke 4-stage ram, constructed to industrial standards specifically for the VES range. It allows the removal of the floor chains as the material feed method; traditionally the problematic part of any rear-discharge spreader design.

**Reliability** - every model utilises a 4 stage, chrome ram that has been specifically designed and produced for our VES range for incredible reliability compared to traditional floor chains.

**Compact Design** - the removal of floor chains allows our VES range to have a shorter, deeper body that increases capacity and improves manoeuvrability.

**Slurry Spreading** - the VES range benefits from a completely sealed box, there are no gaps for the floor chains. Combined with the standard slurry door on all models means the VES range can properly hold and spread slurry.

**Ground Clearance & Traction** - the VES range also has improved ground clearance due to the removal of floor chains; 520mm minimum ground clearance on the VES-1500 model. In addition the axle on all our models can be placed further back since there is no gearbox required to drive the floor chains, this improves traction and reduces weight transfer when spreading.

**Rotor & Tip Design** - the VES range uses fully-balanced robot welded beaters that are constructed in-house using 10mm steel plates for maximum strength. The beater tips are also constructed from 10mm steel plates and are fully reversible to double the life-span of each tip. It is also important to note that all the tips are secured in sockets to prevent premature loss.

**Excellent Residual Value** - since our VES range commenced production over 15 years ago, its second-hand value has proven to hold up extremely well. This is mainly due to the ram ejection system compared to a floor chain system, which is prone to wearing over time and is always a worry on a used machine.

**Gearbox** - every model uses the same robust 160hp purpose built, one piece gearbox to prevent breakages. The gearbox is also fully protected by an armoured plate underneath the rear of the spreader.

**Dual Protection System** - the entire range has two layers of protection to ensure the spreader is not damaged. Specially formulated polyurethane couplings are used to connect the beaters to the gearbox to reduce the impact of any shock-loads on the drive line and protect the gearbox. In addition every model is protected by a 10mm shear bolt in the PTO shaft.

**Speed Control Unit** - The entire VES range employs an electronic speed control unit that is extremely user-friendly and allows the discharge rate of the pushing ram to be infinitely controlled. This easily allows the material coverage to be varied to meet requirements.



(Model shown: VES-2000 front view)



(Model shown: VES-2000 rear view)



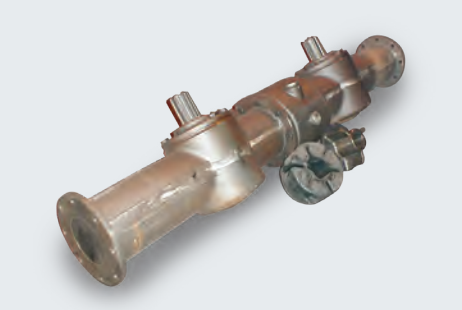
(Front ram and speed control unit)



(Pushing door)



(Rear beater tips)



(Drive gearbox and rubber drives)



# VES REAR-DISCHARGE SPREADER RANGE SPECIFICATIONS & OPTIONAL EQUIPMENT

SCAN THE  
CODE TO  
FIND OUT  
MORE »



	VES-1500	VES-2000	VES-2500
Standard Tyre Size	18.4 x 30 - 12 ply	18.4 x 34 - 12 ply	18.4 x 34 - 12 ply
Axle	8 stud 80mm	10 stud 120mm High Speed Commercial	10 stud 120mm High Speed Commercial
Brakes	350 x 90	420 x 180 S Cam	420 x 180 S Cam
Lights	○	○	○
Floor Thickness	4mm	4mm	4mm
Side Thickness	4mm	4mm	4mm
Slurry Door (Removable)	○	○	○
Carrying Capacity	9 tons	12 tons	14 tons
Volume	1427 gal / 6490 ltr / 229 cu.ft	2000 gal / 9120 ltr / 291 cu.ft	2500 gal / 11400 ltr / 363 cu.ft
HP Requirement	80 HP min	100 HP min	135 HP min
Body Dimensions	9' 10" x 5' x 4' 8" Deep	12' 6" x 5' x 4' 8" Deep	15' 7" x 5' x 4' 8" Deep
Loading Height	7' 2"	7' 7"	7' 7"
Unladen Weight	4080 kgs	4380 kgs	5000 kgs
Discharge Rate	5 min. max.	7 min. max.	9 min. max.
Material Feed	Hydraulic Ram	Hydraulic Ram	Hydraulic Ram
Rotor Speed	350rpm	350rpm	350rpm
Spread Width	Up to 16m	Up to 16m	Up to 16m
Standard PTO Input Speed	1000	1000	1000
Tips - Quantity	58	58	58
Overall Width - Standard Wheels	8' 10"	8' 10"	8' 10"
Overall Width - Oversized Wheels	9' 7"	9' 7"	9' 7"
Overall Length	19' 2"	22' 10"	26'
Beater Protection Shear Bolt	10mm Standard	10mm Standard	10mm Standard
Main Ram Oil Volume Maximum	15 litres	20 litres	37 litres
<b>OPTIONAL EQUIPMENT</b>			
23.1 x 26 - 14 ply Tyres	○ (DF-1)	○ (DF-1)	○ (DF-1)
Wide Angle Shaft	○ (DF-0.25)	○ (DF-0.25)	○ (DF-0.25)
Hydraulic Light Covers	○ (DF-2)	○ (DF-2)	○ (DF-2)
LED Tail Lights	○	○	○
LED Beacon	○ (DF-0.25)	○ (DF-0.25)	○ (DF-0.25)
Air Brakes	○	○	○

Scan the QR code above or visit [www.marshall-trailers.co.uk](http://www.marshall-trailers.co.uk) for our retail pricing & full range of options.

U.K. & Ireland Patent Numbers - GB2372932 & GB2399267B



(Model shown: VES-1500 front view)



(Model shown: VES-1500 rear view)



(Rear rotor bearings)



(Front upstand)

Dealer Fit ● Standard ○ Optional ● Not Available

**MARSHALL TRAILERS**

PRODUCT BROCHURE 2025  
PAGE 39



## ST SLURRY TANKER RANGE





# EASY TO USE AND BUILT TO LAST

SCAN THE  
CODE TO  
FIND OUT  
MORE »



The ST range has been intelligently designed to maximise strength and also ensure every model is operator friendly.

**Chassis Design** - the overall rigidity of our tanker range is boosted by our integral chassis, which supports the tank to reduce fatigue and prevent premature failure.

**Axles & Brakes** - hydraulic brakes are standard on all models with the option for air brakes on the ST-1600 model upwards. On the ST-2000, ST-2300 and ST-2550 a drop-axle is used to lower the centre of gravity by 130mm for improved stability. Commercial 420 x 180 axles are standard on the ST-2000 model upwards.

**Tank Design** - every model has a 6mm thick steel tank that is rolled and fully-welded by a sub-arc welder to ensure a consistent and robust finish. Inside the tank there are baffles to ensure material is transported safely and reinforcing rings to further enhance the tanks strength.

**Lights** - lights are standard on all models, with the ST-2000 model upwards benefitting from dual, high-level LED lights as standard. LED beacons are also available as an option.

**Dual Slurry Trap System** - the entire range benefits from our dual protection system. The first line of protection is a specially designed double-ball set-up in the tank that stops the vacuum once it has reached a certain level. If any froth should manage to by-pass this system then there is a slurry trap in the large syphon box to catch any residue.

**Valves** - every model has a hand operated side valve as standard, which can also be positioned on the rear to allow for easy filling. It is also possible to specify a different position for filling valves as an option.

**Pump** - either an 8,000ltr, 10,000ltr or 12,000ltr Hertell pump is standard on our tankers to ensure fast filling and discharging of material. There is also an option to fit a hydraulic drive pump or Garda pump depending on the application of the tanker.

**Dribble Bars** - these are available as an option on all models to ensure compliance with the latest regulations. The popular size is a detachable 7.5m version.

**Gauge & Sight-glasses** - all our models have a liquid filled 75mm gauge to provide accurate pressure readings and ensure safe loading of the tank. Furthermore two sight-glasses positioned at the front and rear of the tanker allow the operator to know when the tank is full.

**Cubic Capacities** - the capacity of every tank is accurate, even tankers with recessed wheels have increased capacities to compensate for the wheel recesses.



(Model shown: ST-2550 side view)



(Model shown: ST-2300 front view)



(Model shown: ST-2550 front view)



(Model shown: ST-1600 rear view)



(Easy connect)



(Garda pump)

# ST SLURRY TANKER RANGE SPECIFICATIONS & OPTIONAL EQUIPMENT

SCAN THE  
CODE TO  
FIND OUT  
MORE »



	ST-1200	ST-1400	ST-1600	ST-1800	ST-2000	ST-2300	ST-2550	ST-3000	ST-3500
Standard Tyre Size	385 - 65 x 22.5	385 - 65 x 22.5	550 - 60 x 22.5	550 - 60 x 22.5	750/60 - 30.5	750/60 - 30.5	750/60 - 30.5	385 - 65 x 22.5	385 - 65 x 22.5
Axle	70mm 6 stud	80mm 8 stud	80mm 8 stud	80mm 8 stud	120mm 10 stud High Speed Commercial Drop-axle 130mm	120mm 10 stud High Speed Commercial Drop-axle 130mm	120mm 10 stud High Speed Commercial Drop-axle 130mm	120mm 10 stud High Speed Commercial Tandem	120mm 10 stud High Speed Commercial Tandem
Brakes	300 x 60	350 x 90	350 x 90	350 x 90	420 x 180 S Cam	420 x 180 S Cam	420 x 180 S Cam	420 x 180 S Cam	420 x 180 S Cam
Volume	1220 gal / 5500 ltr	1400 gal / 6300 ltr	1550 gal / 7000 ltr	1800 gal / 8200 ltr	2150 gal / 9800 ltr	2340 gal / 10650 ltr	2560 gal / 11600 ltr	3000 gal / 13640 ltr	3500 gal / 15910 ltr
Overall Width (Standard Wheels)	7' 5" / 2.27m	7' 11" / 2.42m	8' 6" / 2.59m	8' 6" / 2.59m	9' 4" / 2.84m	9' 8" / 2.94m	9' 8" / 2.94m	7' 8" / 2.32m	7' 8" / 2.32m
Overall Height (Standard Wheels)	8' 3" / 2.5m	8' 3" / 2.5m	8' 6" / 2.59m	8' 6" / 2.59m	8' 6" / 2.59m	8' 6" / 2.59m	8' 6" / 2.59m	9' 10" / 3m	9' 10" / 3m
Side Valve	○	○	○	○	○	○	○	○	○
Tank Thickness	6mm	6mm	6mm	6mm	6mm	6mm	6mm	6mm	6mm
Lights and Brakes	○	○	○	○	Standard - Dual LED Lights	Standard - Dual LED Lights	Standard - Dual LED Lights	Standard - Dual LED Lights	Standard - Dual LED Lights
Drum Diameter	5' 3"	5' 3"	5' 3"	5' 3"	5' 3"	6'	6'	6'	6'
Pump - Hertell	8000 ltr	8000 ltr	8000 ltr	8000 ltr	10000 ltr	10000 ltr	10000 ltr	12000 ltr	12000 ltr
6 inch Hose	15'	15'	15'	15'	15'	20'	20'	20'	20'
Unladen Weight	1945 kgs	2120 kgs	2330 kgs	2510 kgs	3660 kgs	3890 kgs	4140 kgs	4800 kgs	5350 kgs
OPTIONAL EQUIPMENT									
16/70 x 20 Track Tread	○ (DF-0.5)	○ (DF-0.5)	○	○	○	○	○	○	○
550-45 x 22.5 Fitted 8 Stud	○ (DF-2)	○	○	○	○	○	○	○	○
550-60 x 22.5 Fitted 8 Stud	○	○ (DF-1)	○	○	○	○	○	○	○
560-45 x 22.5	○	○	○	○	○	○	○	○ (DF-1)	○
560-60 x 22.5	○	○	○	○	○	○	○	○	○
Spring Drawbar	○	○	○	○	○	○	○	○	○
Swivel Hitch	○	○	○	○	○	○	○	○	○
Tanker Hydraulic Hatch	○	○	○	○	○	○	○	○	○
Full Opening Rear Door	○	○	○	○	○	○	○	○	○
Mudguards	○	○	○	○	○	○	○	○	○
10,000 ltr Pump Hertell	○	○ (DF-1)	○ (DF-1)	○ (DF-1)	○	○	○	○	○
Hydraulic Pump	○ (DF-1.5)	○ (DF-1.5)	○ (DF-1.5)	○ (DF-1.5)	○ (DF-1.5)	○ (DF-1.5)	○ (DF-1.5)	○ (DF-1.5)	○ (DF-1.5)
Garda Pump (8,000l) c/w Spreader	○	○	○	○	○	○	○	○	○
Spreader / Rain Gun Only	○	○	○	○	○	○	○	○	○
90 degree Bend Complete	○ (DF-0.25)	○ (DF-0.25)	○ (DF-0.25)	○ (DF-0.25)	○ (DF-0.25)	○ (DF-0.25)	○ (DF-0.25)	○ (DF-0.25)	○ (DF-0.25)
Extra Complete Hand Operated Valve	○ (DF-0.25)	○ (DF-0.25)	○ (DF-0.25)	○ (DF-0.25)	○ (DF-0.25)	○ (DF-0.25)	○ (DF-0.25)	○ (DF-0.25)	○ (DF-0.25)
Wash Down Hose	○ (DF-0.25)	○ (DF-0.25)	○ (DF-0.25)	○ (DF-0.25)	○ (DF-0.25)	○ (DF-0.25)	○ (DF-0.25)	○ (DF-0.25)	○ (DF-0.25)
Quick Attach Coupling	○ (DF-0.5)	○ (DF-0.5)	○ (DF-0.5)	○ (DF-0.5)	○ (DF-0.5)	○ (DF-0.5)	○ (DF-0.5)	○ (DF-0.5)	○ (DF-0.5)
Pump Hydraulic Changeover	○ (DF-1)	○ (DF-1)	○ (DF-1)	○ (DF-1)	○ (DF-1)	○ (DF-1)	○ (DF-1)	○ (DF-1)	○ (DF-1)
Marshall Easy-Connect	○	○	○	○	○	○	○	○	○
Air / Oil Brakes	○	○	○	○	○	○	○	○	○
LED Tail Lights	○ (DF-0.5)	○ (DF-0.5)	○ (DF-0.5)	○ (DF-0.5)	○	○	○	○	○
LED Beacon	○ (DF-0.25)	○ (DF-0.25)	○ (DF-0.25)	○ (DF-0.25)	○ (DF-0.25)	○ (DF-0.25)	○ (DF-0.25)	○ (DF-0.25)	○ (DF-0.25)
Sight Tube	○	○	○	○	○	○	○	○	○

Scan the QR code above or visit [www.marshall-trailers.co.uk](http://www.marshall-trailers.co.uk) for our retail pricing & full range of options.

Dealer Fit    ○ Standard    ○ Optional    ● Not Available

MARSHALL TRAILERS

PRODUCT BROCHURE 2025  
PAGE 42



# OPTIONAL EQUIPMENT

SCAN THE  
CODE TO  
FIND OUT  
MORE »



Air Brakes



Oil Brakes LSV



Hyd Door Safety Valve



8" Hatch



12" Hatch



Perspex Front  
Window - Small



Perspex Front  
Window - Large



Trailer Cover



Roll-over Cover



Hydraulic Front  
to Back Cover



LED Lights



High Level LED Lights



LED Beacon



Spring Drawbar



Rear Tow Hitch



Hyd Up & Over  
Grain Door



Hyd Grain Door c/w  
Silage Attachment



Bale Extension



Top & Bottom  
Hinged Door



Mesh Sides



Jack Screw



Rear Ramps



Rear Box Pusher



Hydraulic Walkway



Rear Toolbox



Slurry Bib



Tanker Hydraulic Hatch



Full Opening Rear Door



Quick Attach Coupling



Escape Hatch



Garda Pump System



Hydraulic Drive Pump

MARSHALL TRAILERS

PRODUCT BROCHURE 2025  
PAGE 43

# TYRE GUIDE

SCAN THE  
CODE TO  
FIND OUT  
MORE »



1  26 x 12.0 x 12	2  12.5 x 15.3	3  400 - 60 x 15.5	4  340 x 65 x 18	5  385 - 65 x 22.5	6  400 - 60R x 22.5	7  16 x 70 x 20TT	8  23.1 x 26
9  445 - 45 x 19.5	10  550 - 45 x 22.5	11  560 - 45 x 22.5	12  550 - 60 x 22.5	13  560 - 60 x 22.5	14  600 - 50 x 22.5	15  750 - 60 x 30.5	16  18.4 x 30

385-65 x 22.5		
↓	↓	↓
The first number indicates the width of the tyre and can be metric or imperial. In this example the width of the tyre would be 385mm.	The second number is the depth of the sidewall as a percentage of the tyre width. In this example 65% of 385mm meaning the sidewall of the tyre is 250mm deep.	The final number is the diameter of the tyre's centre and is usually in imperial. In this example the tyre centre has a diameter of 22.5".

## BRAKES

All 385 - 65 x 22.5 tyres are rebuilt tyres fitted to new centres.

All 400 - 60R x 22.5 tyres are rebuilt tyres fitted to new centres.

If 550 - 45 x 22.5 or 560 - 45 x 22.5 tyres are fitted to QM-11, QM-12, QM-1200, HD-12, HD-14 or HD-16 models then mudguards are required - see page 15 or page 19.

If 560 - 60 x 22.5 or 550 - 60 x 22.5 tyres are fitted to QM or BC Models the loading height of the trailers increases by 8".

Correct tyre pressures are available on our website [www.marshall-trailers.co.uk/downloads](http://www.marshall-trailers.co.uk/downloads)

TYRE INFORMATION			
	TYRE SIZE	TYPE	DESCRIPTION
1	26 x 12.0 x 12	Floating	Fits to small trailers and provides fantastic floatation.
2	12.5 x 15.3	Floating	Primarily designed to provide floatation for field work.
3	400 - 60 x 15.5	Floating	This wide tyre provides floatation above a 12.5 x 15.3.
4	340 - 65 x 18	New Radial	Also known as a mini super single, it is excellent for road work.
5	385 - 65 x 22.5	Radial - Remould	Also known as a super single and designed for road performance.
6	400 - 60R x 22.5	Radial - Remould	Similar to a super single but marginally wider for better floatation.
7	16 x 70 x 20TT	Floating	The track tread means this tyre is excellent at field work.
8	23.1 x 26	Floating	Track tread pattern for excellent lateral grip.
9	445 - 45 x 19.5	New Radial	Low and wide radial tyre designed for high speed road performance.
10	550 - 45 x 22.5	Floating	Excellent tyre for floatation, designed primarily for the field.
11	560 - 45 x 22.5	New Radial	Designed to provide good road performance and floatation.
12	550 - 60 x 22.5	Floating	Excellent tyre for floatation, designed primarily for the field.
13	560 - 60 x 22.5	New Radial	Designed to provide good road performance and floatation.
14	600 - 50 x 22.5	New Radial	Designed to provide excellent performance on road and off-road.
15	750 - 60 x 30.5	Floating	Massive tyre to provide incredible floatation.
16	18.4 x 30	Floating	Excellent floatation tyre with a track tread grip.

MARSHALL TRAILERS

PRODUCT BROCHURE 2025  
PAGE 44



# RUNNING GEAR GUIDE

SCAN THE  
CODE TO  
FIND OUT  
MORE »



The increase in tractor speeds and travelling distances means that it is critical to specify the correct axles, brakes and suspension when deciding on a new trailer. Accordingly our guide to running gear highlights the important specs to look for and explains how we can meet these challenges.

**Axles** - Marshalls have always recognised the importance of fitting the appropriate axles to all the models in our range since they have such an effect on machine performance and safety. Unfortunately it is an area where many of our competitors cut-corners and fit axles that cannot cope with modern farming practices. Therefore it has become more important than ever to understand axle sizes when you are comparing machines to ensure they are up to standard; read our axle size explanation below to find out more:

↓ 10 STUD ↓ 120MM ↓ 420 X 180 S-CAM ↓			
<i>The number of studs indicates the size of wheel that can be fitted to the axle. The more studs the larger the wheel that can safely be fitted. If too large a tyre is fitted to an axle it can damage studs or shear the entire hub from the beam.</i>	<i>The larger the beam size the greater the axle's carrying capacity.</i>	<i>The first number indicates the brake drum diameter and the second number the brake shoe width. It is important for these numbers to match up to maximize braking efficiency. It is also important to identify how the brake drum has been produced, whether it is cast or pressed steel.</i>	<i>The type of cam an axle has signifies whether the axle is commercial; only commercial axles have an S-Cam. The advantage of an S-Cam is it forces the brake shoe more evenly against the brake drum compared to a flat cam, therefore increasing the braking force of the axle.</i>

## BRAKES

The braking system is another key part of the running gear of any trailer, particularly when travelling at higher speeds for longer distances. Accordingly Marshalls offer a number of different braking options to ensure our machines exceed the current legislation and will be ready for any future changes to the law.

**Hydraulic Brakes** - this is the standard braking system on all ranges of machines since every tractor can operate hydraulic brakes. Depending on the model, either 20mm or 25mm brake cylinders are fitted to each brake actuator. This set-up has been fully tested and currently exceeds the present 25% efficiency braking regulations. Load sensing is also available as an option on our hydraulic braking systems.

**Air Brakes c/w Load Sensing** - we offer air brakes as an optional extra on many of our models. This supplements our standard hydraulic braking system to ensure that all tractors can safely tow the trailer, even if they are not equipped for air brakes. It is also important to note that all our air brake kits come with load sensing as standard to prevent locking up and skidding the machine tyres. In addition all our air brake kits have a twin line system, with a service for normal braking and an automatic emergency braking in the event of a break away.

**ABS** - the ultimate braking solution, our ABS package comes with 10 stud commercial axles and air brakes. It eliminates the possibility of skidding the tyres and provides maximum braking efficiency.



(8 Stud Flat Cam)



(10 Stud S - Cam)

**Axle Notes** - On our QM-14, QM-1400, QM-16, QM-1600 and QM-1800 models 10 stud 120mm 420x180 S-Cam commercial axles are standard. This is the same size of axle used by HGVs.

**Brakes Notes** - Load sensing for hydraulic or air braking systems is only available on machines with spring suspension. Manual load sensing is available for air brakes on machines with split oscillating suspensions.

## BEHIND THE SCENES

SCAN THE  
CODE TO  
FIND OUT  
MORE »



The last decade at Marshall Trailers has been one of monumental change, with updates and improvements across the manufacturing process! These changes were critical for the company to continue to move forward and ensure the business was positioned to continue trading for another seventy years!

The changes started from the ground upwards and introduced a huge number of manufacturing techniques borrowed from the automotive industry. Simplified designs that looked better and could be produced en-mass were developed; a massive financial investment but also an investment of time to update thousands of drawings.

Design changes were only part of the puzzle and this went hand in hand with updates to the factory's manufacturing equipment and plant. New CNC plasma cutters, robot welders, a CNC saw line and brand-new paint facility were also purchased, moving Marshalls to the cutting edge in the agricultural machinery world. This new plant increased efficiency, but more importantly drastically improved quality as human error was removed from the process.

Finally, the company implemented state-of-the-art software called SAP to run the factory; it is the same software used by various car and tractor manufacturers and is globally acknowledged as the best software solution for manufacturing. It allowed the factory to be much better organised and ensure a smooth and efficient production line was maintained, improving delivery times and driving up quality.

These changes are just a very small insight into the effort and energy the company invests to deliver the UK's leading agricultural trailers, muckspreaders, tankers and livestock containers!



(Parts delivery trolleys)



(Paint booth)



(New saw line)



(Robotic welding cells)



(SAP tower)



(Operating the factory)



# INTO THE FUTURE

SCAN THE  
CODE TO  
FIND OUT  
MORE »

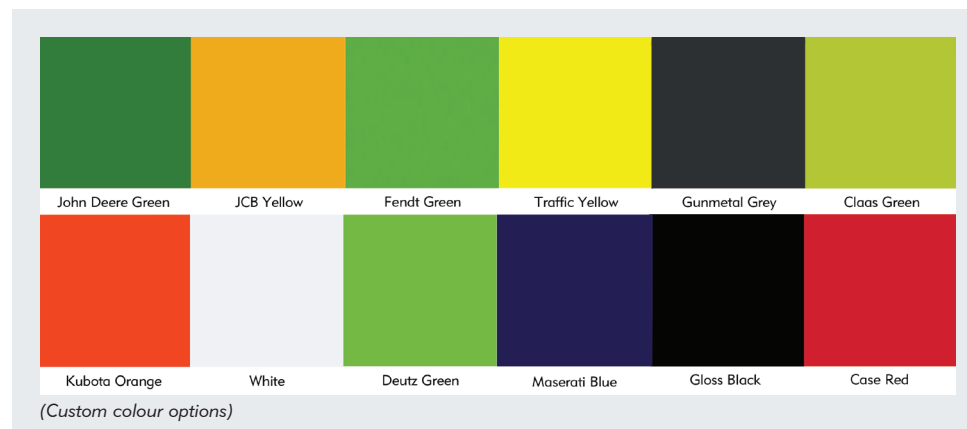


Although we have gone through a huge evolution in the last ten years, we always have one eye on the future! If a company is not going forwards, then it is going backwards; words that we remind ourselves of constantly!

To that end we have a variety of updates planned for 2025, some with our manufacturing process and some for our product line:

- New overhead cranes are planned for our finishing area to speed up fitting and reduce handling marks, while also improving safety.
- The office facility is going to be updated and expanded to make room for customer visits and create a better working environment.
- This year we will be implementing a new website with new features including a better search feature for spare parts.
- We will be redesigning our hybrid dumper range and adding to the range of wheels on offer for it.
- We are adding a brand-new lifting system to our finishing area to ensure the quality of our products is maintained throughout the whole process.

These are only the highlights, and there will be hundreds of improvements made throughout 2025 to ensure we are always delivering good value to customers.



## CONVERSION CHART

The following conversion chart will be useful when reading this brochure for calculating the amount of space required for certain agricultural materials.

Material	Kg/m <sup>3</sup>	lb/cu.ft
Barley	620	39
Carrots	636	40
Clay	1764	111
Fertiliser (bulk)	1017	64
Manure	922	58
Onions	556	35
Peat	985	62
Potatoes	699	44
Sand (dry)	1319	83
Silage (maize)	524	33
Stone (crushed)	2544	160
Sugar beet	556	35
Wheat	763	48

## TERMS & CONDITIONS

All photographs and specifications used were current when this brochure was prepared but due to constant endeavour to improve our products, specification and prices, changes may be made without prior notice.

All prices are subject to additional VAT.

All machines are subject to a carriage charge, details are available from our website. Additional equipment, if ordered separately, will be charged at net carrier cost.

No guarantee is given that bespoke colours will exactly match customers' requirements.

Times to dealer fit parts are only for guidance purposes.



Thank you to our loyal customers for their continued support, if you would like your Marshall machine to be featured on our facebook page and possibly in our 2026 product brochure then please send us your photos.

**Charles J Marshall (Aberdeen) Ltd.**

Address: Chapel Works, Bucksburn, Aberdeen AB21 9TL

Telephone: 01224 722777

Email: [admin@marshall-trailers.co.uk](mailto:admin@marshall-trailers.co.uk)



[www.marshall-trailers.co.uk](http://www.marshall-trailers.co.uk)



[www.facebook.com/marshalltrailers](https://www.facebook.com/marshalltrailers)



[www.instagram.com/marshall\\_trailers](https://www.instagram.com/marshall_trailers)